

SCREEN

design Francesco Rota
2016



SCREEN

Its research into the latest and upcoming developments of the light-office has led lapalma to 360° planning, offering solutions to architects and interior designers characterized by versatility, precision and concreteness. SCREEN, a collection of partitions designed by Francesco Rota, was expressly designed after realizing that the office environment has increasingly become an open-space, where operations and management share the space with lounge areas, break out areas and meeting rooms. This innovative element defines each area, providing it with the proper degree of privacy. It has a frame of aluminum section that arches for free standing and is available in 3 heights: the shortest height (about 80 cm) was designed to be integrated into the PLUS sofa-system, the medium size (about 120 cm) serves low-seating environments, whereas the highest version (about 160 cm) allows privacy also when people are standing. Being modular, SCREEN grants great freedom in composing. Moreover, the choice of materials (wood tubes and upholstery of fabric) lets you personalize. SCREEN has thus become a piece of interior design, aiming at creating an intimate spot in a domestic environment or in a collective area.



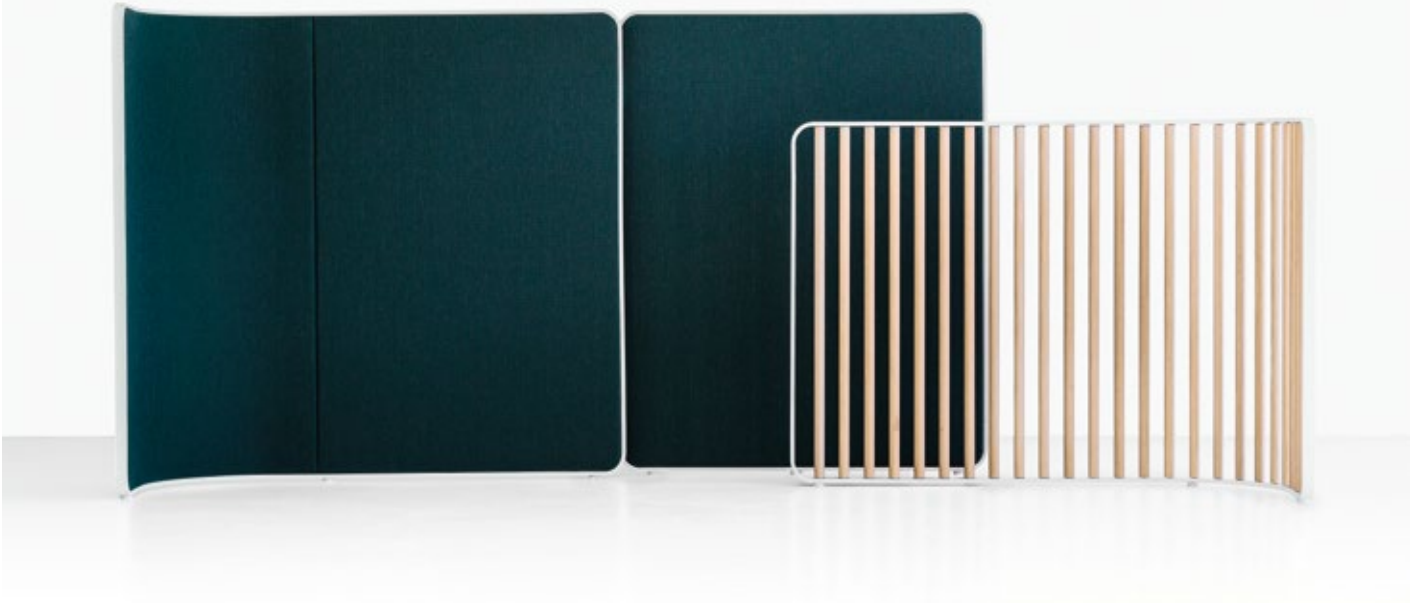
SCREEN



SCREEN



SCREEN

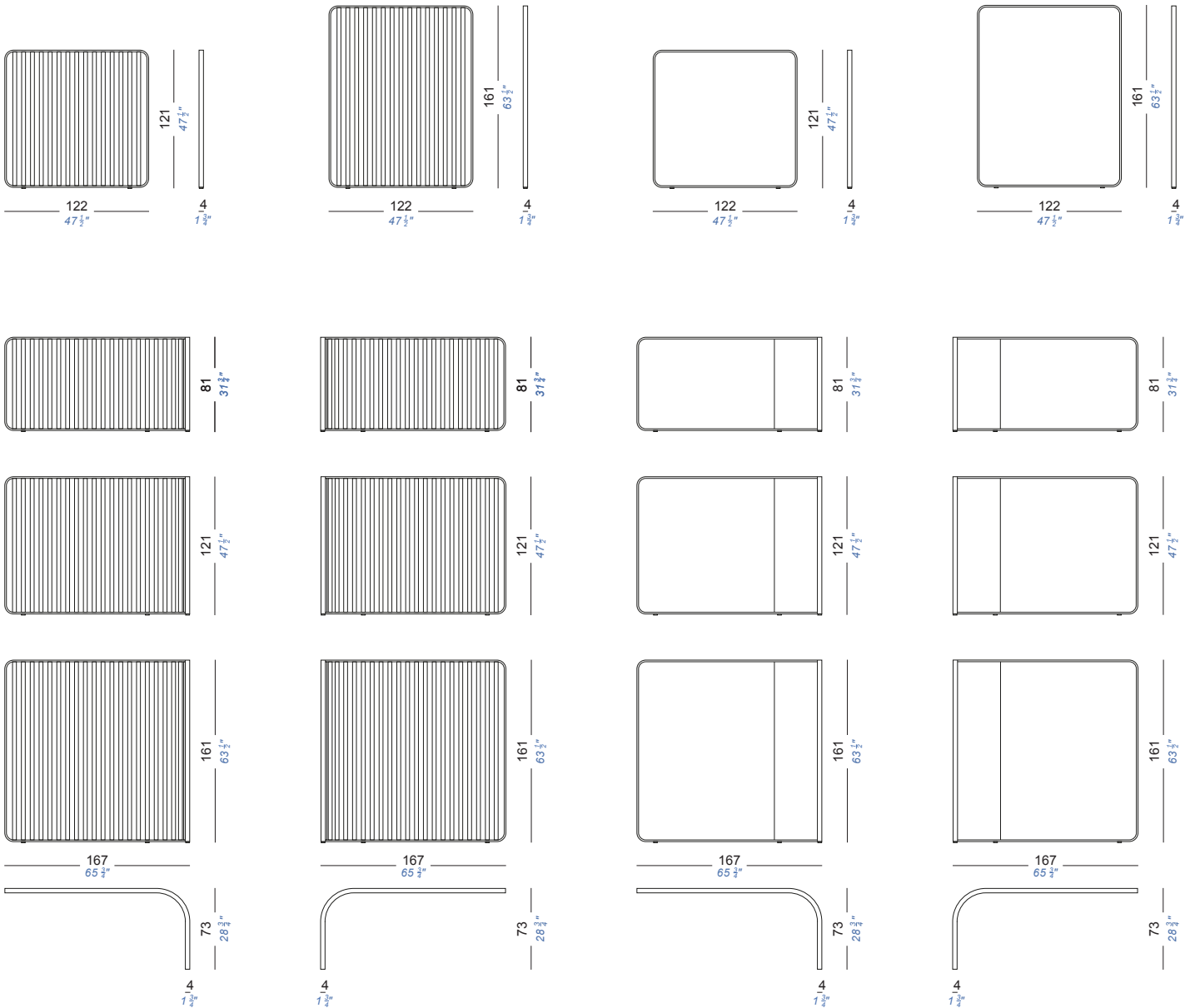


SCREEN

design Francesco Rota
2016

System of free standing screens with metal frame powder coated and metal tubes veneered in blanchéd oak or black stained, or panel in fire-retardant polyurethane upholstered with fabric. The straight partition is available in perforated metal plate too. The partitions can be easily linked with magnets to create flowing lines or reconfigurable partitions for temporary privacy area in open spaces.

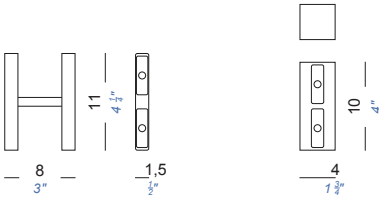
partition system



SCREEN

design Francesco Rota
2016

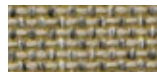
magnets



frame
powder coated:
black



powder coated:
white



upholstery
fabric:
Hestan
16 colors



fabric:
Maya
43 colors



blanched oak



black open pore

consult the portfolio for the range of colors.

use and maintenance instructions

Clean all parts in wood, leather, fabric and metal with a damp cloth or a diluted neutral cleaner. Do not use cleaners with alcohol, bleach, solvent or abrasive products. Any liquid spill on the product must be wiped up immediately. When lifting or moving the product, hold it on the structure and not under the seat. The product should not be subjected to unbalanced weights, as it is designed for a proper rest on the foothold (on four legs or on the base). Our company relieves from any responsibility in case of damage caused to fragile floors. Avoid any improper use of the product: do not step on the product, on the footrest or on the armrests. Avoid any movements that could compromise the proper functionality of the product or the safety of the users. Wood and leather, being natural materials, could be easily damaged. Small impurities or imperfections are within quality standard range. Do not expose the product to weather conditions or atmospheric agents, nor to heat sources over 40°C. Also products for outdoor use could be afflicted by atmospheric agents. The product could undergo possible exterior changes due to particular exposure to heat, humidity and saltiness. An appropriate and frequent maintenance and cleaning of the product enhances its durability. The product could change colour and shade, if exposed to direct sunlight. Maintenance has to be carried out by experienced staff. Dispose of the package only after assembling the product, in order to avoid the loss of ironmongery and components. Once the product has been dismantled, the product itself or its components must be given to the public garbage disposal system, according to the legislation in force.