

Finishes,

Mesh

by Patricia Urquiola

kettal

Finishes, Mesh

Designer
Patricia Urquiola

Collection
Plumon

1/3

Materials

Aluminium

Antioxy, Heavy Load, Resistant
En-1421, Kettalize-It, Anti-
Scratch, Easy Clean, Flame
Retardant M1, Eco Friendly
Ecoembes Recycling Process

Teak

Eco-friendly, A-grade, Heavy
Load

Fabric

Heavy Load, 100.000 Cycles,
Heavy Load Resistant 1000
Decitex, Kettalize-It, Resist
U.V. En-581-4, Easy Clean,
Abrasion, Resistance 30.000
Cycles, Quickdry

Frame Color Options

Terrain Paints



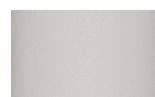
Slate Stone
01C



Mysty Smoke
02C



Ash
03C



Bone
04C



Tuff
05C



Wet Stone
06C



Sand Dune
07C



Dry Clay
08C



Arabica
09C



Sepia
19C



Rose Canyon
16C



Blossom
20C



Ruby Dust
18C



Sunset Glow
17C



Terrarosa
15C



Terracota
14C



Amber
13C



Ginger Root
12C



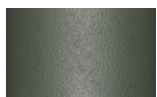
Desert Storm
11C



African Savannah
10C



Spring Meadow
28C



Kombu
29C



Forest Stream
27C



Sea Moss
26C



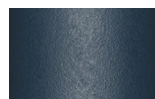
Glacier Ice
25C



Polar Sky
24C



Nightfall
23C



Indigo
22C



Wild Lupin
21C



Galena
33C



Bronze
30C



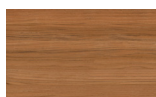
Corten
31C



Manganese
32C

Legs Color Options

Wood



Teak

Finishes, Mesh

Designer
Patricia Urquiola

Collection
Plumon

2/3

Cushion Color Options

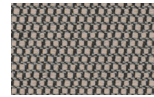
Terrain Elements Laminate



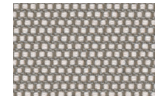
Charcoal
01L



Cumulus
02L



Fog
09L



Porous Grey
08L



Snowcap
03L



Moonstone
07L



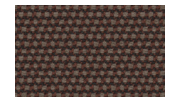
Karakum
06L



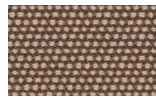
Cambium
12L



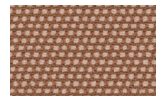
Raku
11L



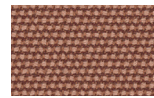
Clove
13L



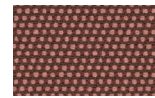
Desert Rose
14L



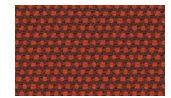
Pink Salt
15L



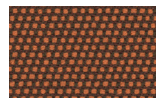
Pacific Dawn
16L



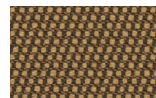
Acer
17L



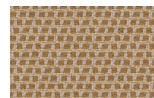
Firetail
18L



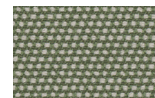
Glowing Ember
19L



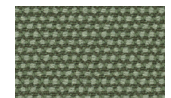
Tiger Eye
05L



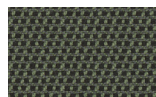
Goldrush
04L



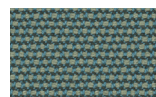
Sea Heart
22L



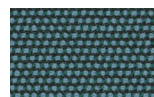
Heath
21L



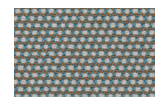
Peppercorn
20L



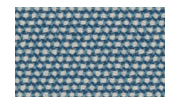
Rock Pool
23L



Tropic
24L



Skylark
25L



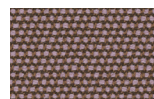
Nautica
26L



Blue Reef
27L



Cosmos
28L



Amethyst
29L

Finishes, Mesh

Designer
Patricia Urquiola

Collection
Plumon

3/3

Cushion Color Options

Tonale Lino



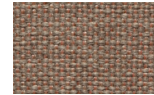
White Chia
61L-61T



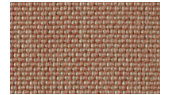
Fennel
62L-62T



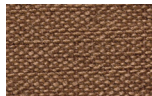
Elwendia
63L-63T



Brown Mustard
64L-64T



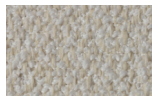
Kampot
65L-65T



Fenugreek
66L-66T

Cushion Color Options

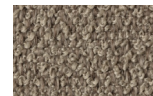
Tonale Boucle



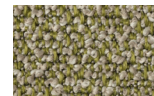
White Poppy
81L-81T



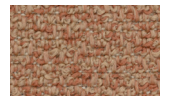
Sesame
82L-82T



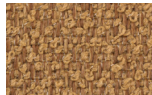
Anise
83L-83T



Dill
84L-84T



Allspice Jamaica
85L-85T



Birds Foot
86L-86T