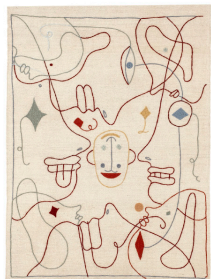


nanimarquina

Silhouette

Design by Jaime Hayon



200x300



170x240



120x150



Can be dry-cleaned

Se puede lavar en seco

Fiber. 90% Afghan wool +
10% New zealand embroidery
Technique. Hand loomed
Type. Kilim
Density. 156,000 knots/m²
Total height. 4 mm
Weight 1.9 kg/m²

Fibra. 100% Lana afgana hilada a mano +
bordado de lana nueva Zelanda
Técnica. Hand loomed
Tipo. Kilim
Densidad. 156,000 nudos/m²
Altura total 4 mm
Peso 1,9 kg/m²



Anti-slip pad included.

Anti-deslizante incluido.



Special sizes available.

Ask for terms and conditions of delivery.

Disponible en medidas especiales.
Consultar condiciones y plazos de entrega.



Certifications

This rug meets the ASTM E648 Class I and CFR 16 Part 1630/1631 flammability requirements for floors. CAL PROP 65 assuring rug free of harmful substances. CAL 117-2013; section 1: cover fabric test.