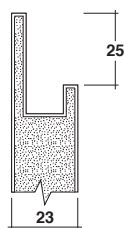
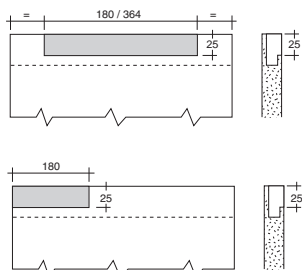
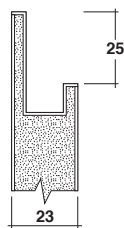


SERIE E DIMENSIONI

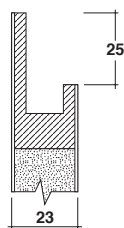
DUEMILAOTTO



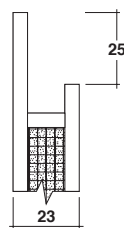
EASYLAK+
SILCOLAK
ECOLAK



POLIESTERE



LEGNO
LEGNO SELECTION
LEGNO EXCLUSIVE

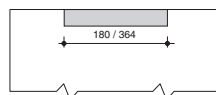


CORIAN®

POSIZIONAMENTO STANDARD

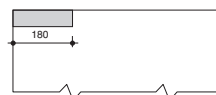
Posizione A - orizzontale centrata

- Su ante a battente, estraibili, cassette, cassettoni e ribalte
- Larghezza 364 mm solo nelle finiture: Easylak+, Silcolak, Ecolak, Poliestere, bianco, Corian®.



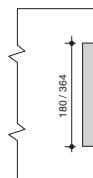
Posizione B - orizzontale sinistra o destra

- Su ante battente, estraibili, cassette e cassettoni di larghezza massima 600 mm.



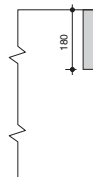
Posizione C - verticale interposta

- Solo su ante uniche colonna.
- Posizionamento in altezza variabile (in funzione del progetto).



Posizione D - verticale superiore o inferiore

- Solo su ante a battente
- Solo nelle finiture: Easylak+, Silcolak, Ecolak, Poliestere bianco, Corian®.



MATERIALE E COMPATIBILITÀ

Ricavata con apposita lavorazione nello spessore dell'anta.

Finiture compatibili:

EASYLAK+ / SILCOLAK / ECOLAK
 - Larghezza 180 mm realizzabile nelle posizioni A - B - C - D
 - Larghezza 364 mm posizioni A - C (su ante uniche colonna solo posizione C)

POLIESTERE

Realizzabile SOLO in colore bianco cod.003. E' ottenuta grazie all'inserimento nell'anta di una parte in massello di Corian® dal quale viene ricavata con le opportune lavorazioni. La parte "scavata" resta quindi in finitura Corian® bianco a differenza di tutte le restanti parti dell'anta (poliestere).
 - Larghezza 180 mm realizzabile nelle posizioni A - B - C - D
 - Larghezza 364 mm posizioni A - C (su ante uniche colonna solo posizione C)

LEGNO / LEGNO SELECTION / LEGNO EXCLUSIVE

Realizzabile in tutte le essenze di gamma escluso Rovere 049.
 - Larghezza 180 mm realizzabile nelle posizioni A - B - C
 - Larghezza 364 mm posizione C (su ante uniche colonna)

CORIAN®

- Larghezza 180 mm realizzabile nelle posizioni A - B - C - D
 - Larghezza 364 mm posizioni A - C (su ante uniche colonna solo posizione C)

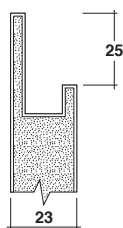
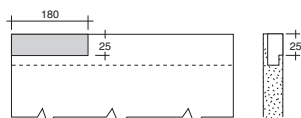
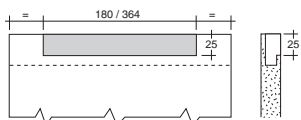
ATTENZIONE !!!

È sconsigliato l'utilizzo di questa maniglia su grandi elettrodomestici (Gaggenau Vario, Miele Mastercool, Sub-Zero o similari).

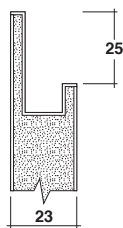
SERIES AND DIMENSIONS



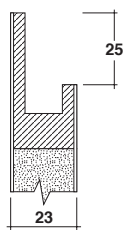
DUEMILAOTTO



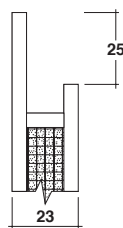
EASYLAK+
SILCOLAK
ECOLAK



POLYESTER



WOOD
WOOD SELECTION
WOOD EXCLUSIVE

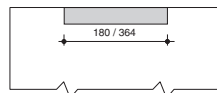


CORIAN®

STANDARD POSITIONING

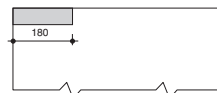
Position A - horizontal centred

- On hinged doors, pull outs, drawers, heavy-duty drawers and flap doors.
- Width 364 mm only for finish: Easylak+, Silcolak, Ecolak, White Polyester, Corian®.



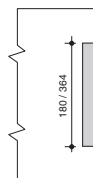
Position B - horizontal left or right

- On hinged doors, pull outs, drawers and heavy-duty drawers maximum width 600 mm.



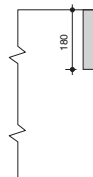
Position C - Vertical

- Only for tall unit single door.
- Custom height positioning (according to the project).



Position D - Vertical, upper or lower

- Only for hinged doors.
- Only for finish: Easylak+, Silcolak, Ecolak, White Polyester, Corian®.



MATERIAL AND COMPATIBILITY

Obtained with a special cut out on door thickness.

Available finishes:

EASYLAK+ / SILCOLAK / ECOLAK
 - Width 180 mm, positions A - B - C - D
 - Width 364 mm positions A - C (on tall unit single door, only position C)

POLYESTER

Available ONLY in colour white cod.003. It is made with a special solid piece of Corian® inserted into the door thickness and then cut out. Therefore the "cut out" part is always white Corian® and different from all the rest of the door (polyester).

- Width 180 mm, positions A - B - C - D
 - Width 364 mm positions A - C (on tall unit single door, only position C)

WOOD / WOOD SELECTION / WOOD EXCLUSIVE

Feasible in all range species except for Oak 049.

- Width 180 mm, positions A - B - C
 - Width 364 mm positions C (on tall unit single door)

CORIAN®

- Width 180 mm, positions A - B - C - D
 - Width 364 mm positions A - C (on tall unit single door, only position C)

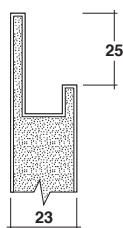
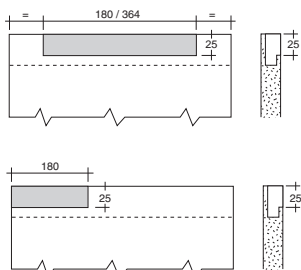
WARNING !!!

The use of this handle on large electrical appliances is not recommended (Gaggenau Vario, Miele Mastercool, Sub-Zero or similar).

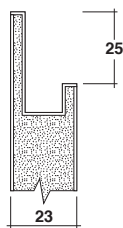
SÉRIE ET DIMENSIONS



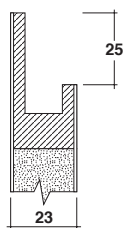
DUEMILAOTTO



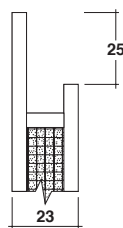
EASYLAK+
SILCOLAK
ECOLAK



POLYESTER



BOIS
BOIS SELECTION
BOIS EXCLUSIVE

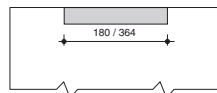


CORIAN®

POSITIONNEMENT STANDARD

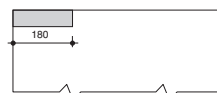
Position A - horizontale centrée

- Sur portes à battant, extractibles, tiroirs, caissons et abattants.
- Largeur 364 mm uniquement dans les finitions: Easylak+, Silcolak, Ecolak, Polyester blanc, Corian®.



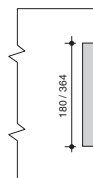
Position B - horizontale droite ou gauche

- Sur portes à battant, extractibles, tiroirs et caissons de largeur maximum 600 mm.



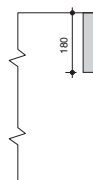
Position C - Verticale interposée

- Uniquement sur portes uniques armoire.
- Positionnement en hauteur variable (en fonction du projet).



Position D - Verticale supérieure ou inférieure

- Uniquement sur portes à battant.
- Uniquement dans les finitions: Easylak+, Silcolak, Ecolak, Polyester blanc, Corian®.



MATERIAU ET COMPATIBILITE

Obtenu avec façon spéciale dans l'épaisseur de la porte.

Finitions compatibles:

EASYLAK+ / SILCOLAK / ECOLAK

- Largeur 180 mm réalisable dans les positions A - B - C - D
- Largeur 364 mm positions A - C (sur portes uniques armoire uniquement position C)

POLYESTER

Réalisable UNIQUEMENT en couleur blanc cod.003. Elle est obtenue grâce à l'insertion dans la porte d'une partie en massif de Corian® dans laquelle elle est obtenue selon les usinages opportuns. La partie "creusée" reste donc en finition Corian® blanc à la différence de toutes les parties restantes de la porte (polyester).

- Largeur 180 mm réalisable dans les positions A - B - C - D
- Largeur 364 mm positions A - C (sur portes uniques armoire uniquement position C)

BOIS / BOIS SELECTION / BOIS EXCLUSIVE

Réalisable dans toutes les essences de gamme sauf Chêne 049.

- Largeur 180 mm réalisable dans les positions A - B - C
- Largeur 364 mm position C (sur portes uniques armoire)

CORIAN®

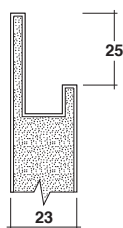
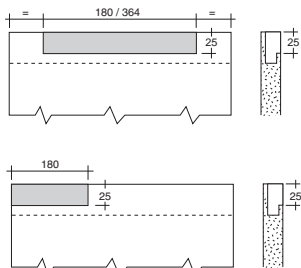
- Largeur 180 mm réalisable dans les positions A - B - C - D
- Largeur 364 mm positions A - C (sur portes uniques armoire uniquement position C)

ATTENTION !!!

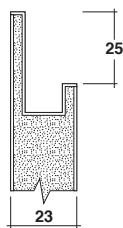
Il est déconseillé d'utiliser cette poignée sur de grands électroménagers (Gaggenau Vario, Miele Mastercool, Sub-Zero ou similaires).

SERIEN UND GRÖSSEN

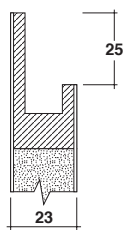
DUEMILAOTTO



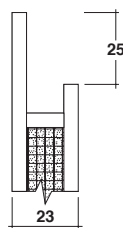
EASYLAK+
SILCOLAK
ECOLAK



POLYESTER



HOLZ
HOLZ SELECTION
HOLZ EXCLUSIVE

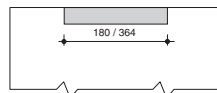


CORIAN®

STANDARDMÄSSIGE POSITIONIERUNG

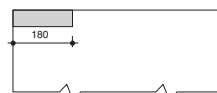
Position A - horizontal mittig

- An Türen, Frontauszügen, Schubladen, Auszüge und Klapptüren.
- Breite 364 mm nur in den Ausführungen: Easylak+, Silcolak, Ecolak, Polyester weiß, Corian®.



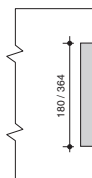
Position B - horizontal rechts oder links

- An Türen, Frontauszügen, Schubladen und Auszügen mit Breite max. 600 mm.



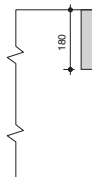
Position C - Vertikal zwischengesetzt

- Nur an Einzeltüren von Hochschränken.
- Unterschiedliche Höhenpositionierung (je nach Planung).



Position D - Vertikal oben oder unten

- Nur an Türen.
- Nur in den Ausführungen: Easylak+, Silcolak, Ecolak, Polyester weiß, Corian®.



MATERIAL UND KOMPATIBILITÄT

Griff mit entsprechender Bearbeitung in der Türstärke eingelassen.

Mögliche Ausführungen:

EASYLAK+ / SILCOLAK / ECOLAK

- Breite 180 mm nur in Positionen A - B - C - D erhältlich
- Breite 364 mm Positionen A - C (an Einzeltüren von Hochschränken nur Position C)

POLYESTER

NUR in der Farbe Weiß Code 003. Ergebnis einer entsprechenden Bearbeitung des massiven Teils aus Corian®, das in die Tür eingefügt wurde. Im Vergleich zum restlichen Teil der Tür (Polyester) verbleibt das „ausgehöhlte“ Teil in der Ausführung Corian® weiß.

- Breite 180 mm nur in Positionen A - B - C - D erhältlich
- Breite 364 mm Positionen A - C (an Einzeltüren von Hochschränken nur Position C)

HOLZ / HOLZ SELECTION / HOLZ EXCLUSIVE

Erhältlich in den Holzarten der Auswahl, außer Eiche 049.

- Breite 180 mm nur in Positionen A - B - C erhältlich
- Breite 364 mm Position C (an Einzeltüren von Hochschränken)

CORIAN®

- Breite 180 mm nur in Positionen A - B - C - D erhältlich
- Breite 364 mm Positionen A - C (an Einzeltüren von Hochschränken nur Position C)

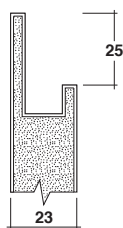
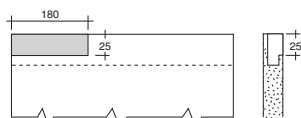
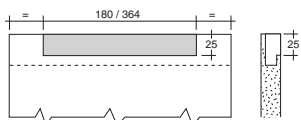
ACHTUNG!

Die Verwendung dieses Griffs bei großen Geräten wird nicht empfohlen (Gaggenau Vario, Miele Mastercool, Sub-Zero oder ähnlich).

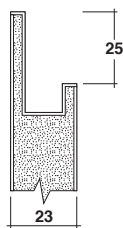
SERIES Y DIMENSIONES



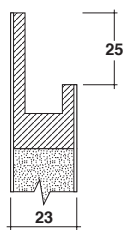
DUEMILAOTTO



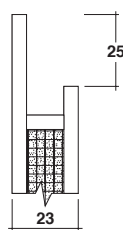
EASYLAK+
SILCOLAK
ECOLAK



POLIÉSTER



MADERA
MADERA SELECTION
MADERA EXCLUSIVE

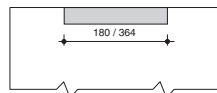


CORIAN®

COLOCACIÓN ESTÁNDAR

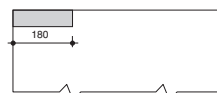
Posición A - horizontal centrado

- En puertas batientes, extraíbles, cajones, gavetas y puertas de apertura horizontal.
- Anchura 364 mm solo en los acabados: EasyLak+, Silcolak, Ecolak, Poliéster blanco, Corian®.



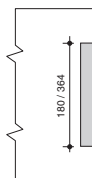
Posición B - horizontal derecha o izquierda

- En puertas batiente, extraíbles, cajones y gavetas de anchura máxima 600 mm.



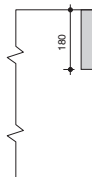
Posición C - Vertical interpuesta

- Sólo en puertas únicas columna.
- Colocación en altura variable (dependiendo del diseño).



Posición D - Vertical superior o inferior

- Sólo en puertas batientes.
- Solo en los acabados: EasyLak+, Silcolak, Ecolak, Poliéster blanco, Corian®.



MATERIAL Y COMPATIBILIDAD

Obtenida con elaboración específica en el espesor de la puerta.

Acabados compatibles:

EASYLAK+ / SILCOLAK / ECOLAK
 - Anchura 180 mm realizable en las posiciones A - B - C - D
 - Anchura 364 mm posiciones A - C (en puertas únicas columna solo posición C)

POLIÉSTER

Realizable SOLO en color blanco cód.003. Se obtiene gracias a la inserción en la puerta de una pieza única de Corian® de la que se obtiene con las elaboraciones oportunas. La parte "excavada" es en acabado Corian® blanco al contrario de todas las otras partes de la puerta (poliéster).
 - Anchura 180 mm realizable en las posiciones A - B - C - D
 - Anchura 364 mm posiciones A - C (en puertas únicas columna solo posición C)

MADERA / MADERA SELECTION / MADERA EXCLUSIVE

Realizable en todas las maderas de gama excluido Roble 049.
 - Anchura 180 mm realizable en las posiciones A - B - C
 - Anchura 364 mm posición C (en puertas únicas columna)

CORIAN®

- Anchura 180 mm realizable en las posiciones A - B - C - D
 - Anchura 364 mm posiciones A - C (en puertas únicas columna solo posición C)

¡ATENCIÓN!!!

No se recomienda el uso de este tirador en grandes electrodomésticos (Gaggenau Vario, Miele Mastercool, Sub-Zero o similares).