



ONE PAGE

Ron Arad, 2024

Conceived by ideally following the modeling of a single sheet of paper, One Page is a tribute to the continuity of forms that enhance Ron Arad's sculptural poetics and Moroso's manufacturing expertise.

The "sheet" is developed in a double layer: the flexible polyurethane upholstery is supported by a rigid polyurethane support structure. The result is an armchair in which the seat, armrests and back create an enveloping, subtle and very comfortable continuum.



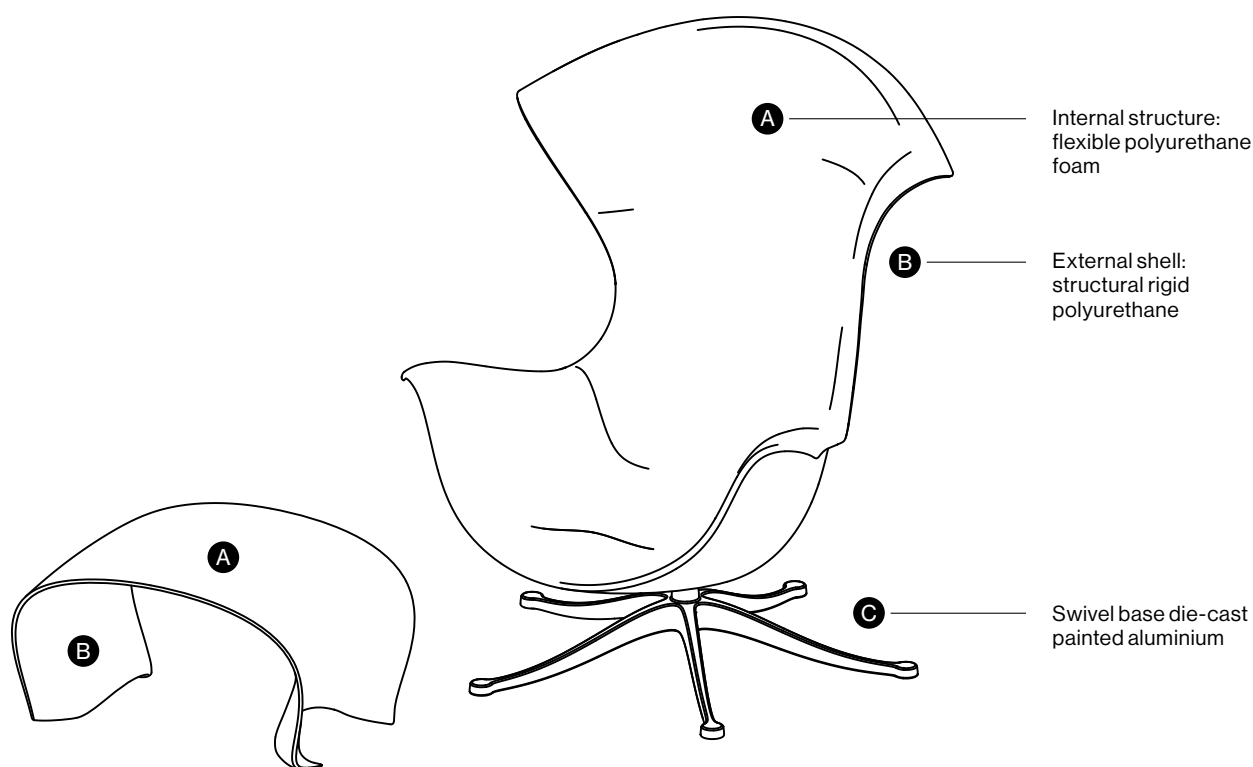
TECHNICAL INFORMATION

ARMCHAIR

STRUCTURE	Moulded shell made of structural rigid polyurethane.
PADDING	Cold-injected flexible polyurethane foam.
SEAT HEIGHT	Without applied load: 38 cm.
OPTIONS	Longitudinally swinging mechanism: swings a few degrees backwards freely. Longitudinal swing mechanism with lock/release lever.
BASE	Five-star swivel base made of die-cast aluminium in matte painted finish, anthracite or black color.
OPTIONS	“Return” mechanism that allows the shell to return to a predetermined position following any rotation.
UPHOLSTERY	The cover is not removable. For recommended fabrics see the table on pages 5-8.

FOOTSTOOL

STRUCTURE	Structural rigid polyurethane shell moulded with flexible polyurethane foam.
UPHOLSTERY	The cover is not removable. For recommended fabrics see the table on pages 5-8.



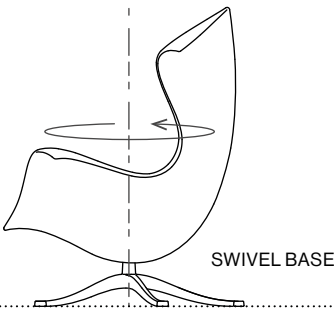
Moroso reserves the right to modify any design and change any technical specifications of any product at any time without prior notice. The drawings do not define the product details; the dimensions reported are indicative and may be subject to change.

ONE PAGE

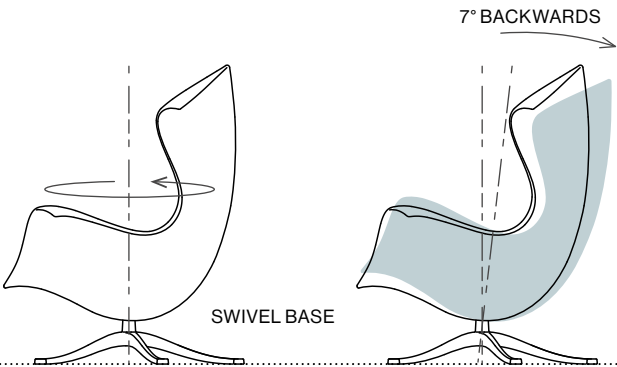
Ron Arad, 2024

TECHNICAL INFORMATION

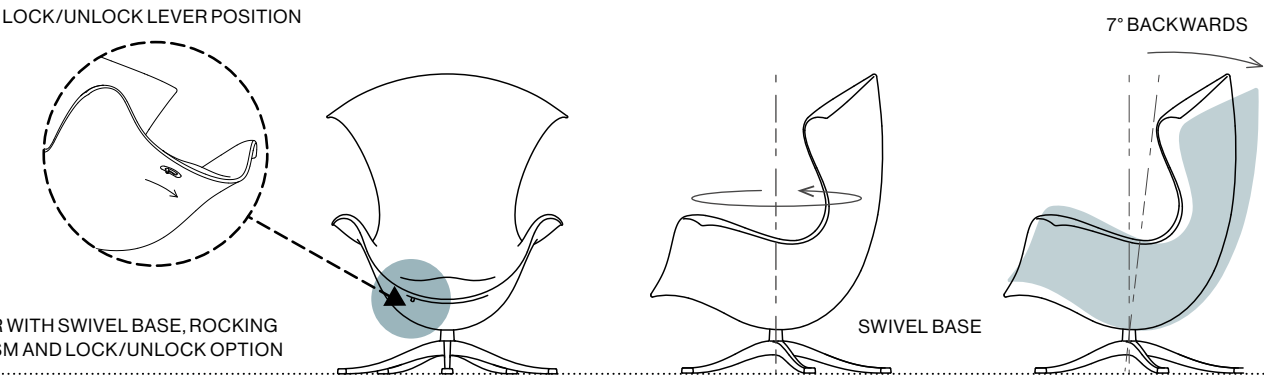
ARMCHAIR WITH SWIVEL
BASE AND FIXED TILT



ARMCHAIR WITH SWIVEL BASE
AND SWINGING MECHANISM

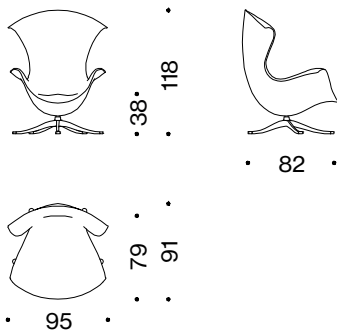


ARMCHAIR WITH SWIVEL BASE, ROCKING
MECHANISM AND LOCK/UNLOCK OPTION



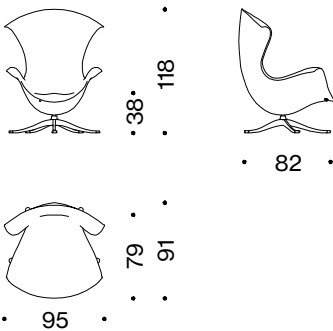
1P00V6

Armchair with swivel base
and fixed tilt



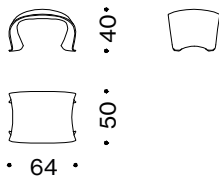
1P01B6

Armchair with swivel base
and swing mechanism



1P00I7

Footstool



Moroso reserves the right to modify any design and change any technical specifications of any product at any time without prior notice. The drawings do not define the product details; the dimensions reported are indicative and may be subject to change.

USAGE CATEGORIES

S Soft Use

cosy and natural, with limited wear resistance

DASDIA bouclé

FERAL peluche

GORKY bouclé

TRONO bouclé

M Medium Use

robust and durable, easy to maintain

ARDA knit fabric

BLUR knit fabric

CLUNIS bouclé

FUZZY bouclé

LEATHER

ORSETTO bouclé

ZAMPOGNA bouclé

H Heavy Use

high technical values, very robust and durable

ZANZIBAR velvet

BOUCLÉS

**S DASDIA**

Typology: bouclé

Composition: 45% cotton, 16% viscose, 14% wool, 13% acrylic, 10% linen, 2% polyamide

Height: appr. 140 cm

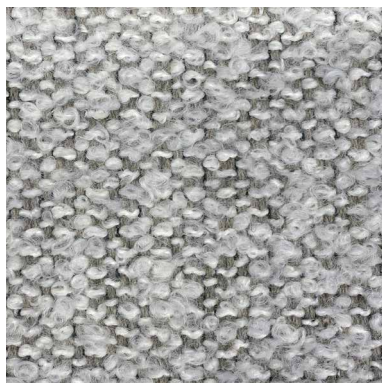
Abrasion resistance: 35.000 cycles

Hanger: **Toppings**
154 + 155

CAT. **S**

Check with your Moroso representative to evaluate modifications, additions and available colours.

The use of customer own fabric is possible previous technical verification by the company.

**S GORKY**

Typology: bouclé

Composition: 37% acrylic, 23% cotton, 17% wool, 12% alpaca wool, 11% polyester

Height: approx. 140 cm

Weight: 625 g/sqm

Abrasion resistance: 15.000 cycles

Pilling resistance: 3

Hanger: **Lovewools**
151

CAT. **S**

Check with your Moroso representative to evaluate modifications, additions and available colours.

The use of customer own fabric is possible previous technical verification by the company.

**M ORSETTO**

Typology: bouclé

Composition: 34% viscose, 33% acrylic, 17% new wool, 8% polyester, 4% linen, 4% cotton

Height: approx. 140 cm

Weight: 940 g/sqm

Abrasion resistance: 50.000 cycles

Rubbing fastness: 5 (dry) 4 (wet)

Colour fastness to artificial light: 5

Pilling resistance: 4

Hanger: **Toppings**
154 + 155

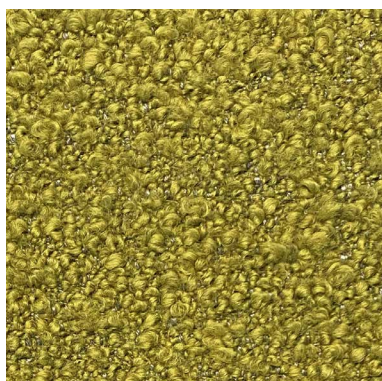
CAT. **S**

Check with your Moroso representative to evaluate modifications, additions and available colours.

The use of customer own fabric is possible previous technical verification by the company.

COVERS: Covers must be washed or cleaned according to the instructions reported on the product label. In case of stains, always contact an authorised centre.

DISPOSAL: in order to respect the environment, it is recommended, at the end of the product's life, to separate the various component parts as much as possible and follow the respective recycling, recovery or disposal procedures in accordance with the regulations in force in the countries concerned.



S RICCIOLONE

Typology: bouclé

Composition: 56% acrylic, 15% polyester, 12% viscose, 11% cotton, 6% linen

Height: approx. 140 cm

Weight: 652 g/sqm

Abrasion resistance: 30.000 cycles

Rubbing fastness: 4-5 (dry) 4 (wet)

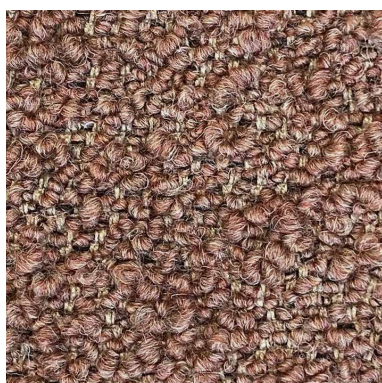
Colour fastness to artificial light: 5

Pilling resistance: 4

Hanger: **Forest Wandering** CAT. **S**
147 + 148 + 149 +150

Check with your Moroso representative to evaluate modifications, additions and available colours.

The use of customer own fabric is possible previous technical verification by the company.



S TRONO*

Typology: bouclé

Composition: 37% viscose, 20% acrylic, 20% new wool, 15% polyester, 5% linen, 3% elasthan

Height: approx. 140 cm

Weight: 750 g/sqm

Abrasion resistance: 25.000 cycles

Rubbing fastness: 4-5 (dry) 4 (wet)

Colour fastness to artificial light: 5

Pilling resistance: 4

Hanger: **Forest Wandering** CAT. **W**
147 + 148 + 149 +150

Check with your Moroso representative to evaluate modifications, additions and available colours.

The use of customer own fabric is possible previous technical verification by the company.

.....
**In the same hanger it is possible to use also the Zampogna fabrics.*



M FUZZY

Typology: bouclé

Composition: 48% viscose, 36% wool, 13% cotton, 3% polyamide

Height: appr. 140 cm

Weight: 550 g/sqm

Abrasion resistance: 40.000 cycles

Colour fastness to artificial light: 6

Pilling resistance: 4-5

Hanger: **Toppings** CAT. **W**
154 + 155

Check with your Moroso representative to evaluate modifications, additions and available colours.

The use of customer own fabric is possible previous technical verification by the company.



M CLUNIS

Typology: bouclé

Composition: 33% wool, 25% acrylic, 25% polyester, 15% cotton, 2% polyamide

Height: appr. 137 cm

Abrasion resistance: 40.000 cycles

Hanger: **Toppings** CAT. **Y**
154 + 155

Check with your Moroso representative to evaluate modifications, additions and available colours.

The use of customer own fabric is possible previous technical verification by the company.

.....
COVERS: Covers must be washed or cleaned according to the instructions reported on the product label. In case of stains, always contact an authorised centre.

DISPOSAL: in order to respect the environment, it is recommended, at the end of the product's life, to separate the various component parts as much as possible and follow the respective recycling, recovery or disposal procedures in accordance with the regulations in force in the countries concerned.

VELVETS

**H ZANZIBAR****Typology:** velvet**Composition:** 100% mohair (base: cotton)**Height:** approx. 140 cm**Weight:** 575 g/sqm**Abrasion resistance:** 80.000 cycles**Rubbing fastness:** 4-5 (dry) 4-5 (wet)**Colour fastness to artificial light:** 5**Pilling resistance:** 4-5Hanger: **Velvets and Furs**
152CAT. **Z***Check with your Moroso representative to evaluate modifications, additions and available colours.**The use of customer own fabric is possible previous technical verification by the company.*

KNITTED FABRIC

**M ARDA****Typology:** jacquard elastic knit**Composition:** 70% new wool,
21% polyester, 9% nylon**Height:** approx. 140 cm**Weight:** 560 g/sqm**Abrasion resistance:** 50.000 cycles**Rubbing fastness:** 4-5 (dry) 4 (wet)**Colour fastness to artificial light:** 5-6**Pilling resistance:** 4-5Hanger: **Forest Wandering**
147 + 148 + 149 +150CAT. **Z***Check with your Moroso representative to evaluate modifications, additions and available colours.**The use of customer own fabric is possible previous technical verification by the company.***M BLUR****Typology:** knitted fabric**Composition:** 35 % recycled polyester
padding, 35% new wool, 15% recycled
polyester, 15% nylon**Height:** approx. 240 cm**Weight:** 570 g/sqm**Abrasion resistance:** 65.000 cycles**Rubbing fastness:** 4-5 (dry) 4-5 (wet)**Colour fastness to artificial light:** 4-5**Pilling resistance:** 4Hanger: **Hyper Knit**
142CAT. **Z***Check with your Moroso representative to evaluate modifications, additions and available colours.**The use of customer own fabric is possible previous technical verification by the company.*

PELUCHE

**S FERAL****Typology:** peluche**Composition:** 36% acrylic, 28% cotton,
14% mohair wool, 14% wool, 8% polyamide**Height:** appr. 155 cm**Weight:** 730 g/sqm**Abrasion resistance:** 32.000 cycles**Color fastness to dry cleaning:** A (EN 14465)**Pilling resistance:** 3-4Hanger: **Velvets and Furs**
153CAT. **Z***Check with your Moroso representative to evaluate modifications, additions and available colours.**The use of customer own fabric is possible previous technical verification by the company.***COVERS:** Covers must be washed or cleaned according to the instructions reported on the product label. In case of stains, always contact an authorised centre.**DISPOSAL:** in order to respect the environment, it is recommended, at the end of the product's life, to separate the various component parts as much as possible and follow the respective recycling, recovery or disposal procedures in accordance with the regulations in force in the countries concerned.

LEATHERS



M LEATHER T

Typology: robust leather with a distinctive, even grain

Thickness: 1,3 -1,4 mm

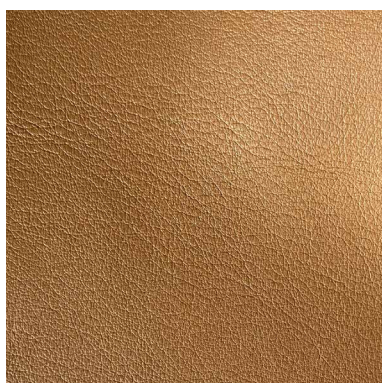
Weight: 800 g/sqm

Hanger: **Leather M05**

CAT. **T**

Check with your Moroso representative to evaluate modifications, additions and available colours.

The use of customer own fabric is possible previous technical verification by the company.



M LEATHER Z

Typology: leather with a very soft and supple feel

Thickness: 1,2 -1,5 mm

Weight: 800 g/sqm

Hanger: **Leather M06**

CAT. **Z**

Check with your Moroso representative to evaluate modifications, additions and available colours.

The use of customer own fabric is possible previous technical verification by the company.

COVERS: Covers must be washed or cleaned according to the instructions reported on the product label. In case of stains, always contact an authorised centre.

DISPOSAL: in order to respect the environment, it is recommended, at the end of the product's life, to separate the various component parts as much as possible and follow the respective recycling, recovery or disposal procedures in accordance with the regulations in force in the countries concerned.



Moroso Spa
via Nazionale 60
33010 Cavallico,
UD - Italy
T +39 0432 577 111
info@moroso.it
moroso.it

PRODUCT SHEET — MARCH 2025