

# TEXTILES



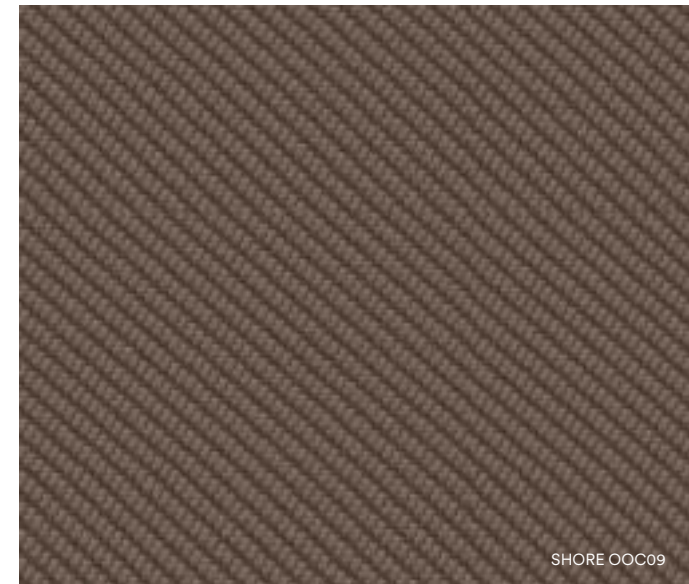
We have carefully curated our selection of textiles from some of the best suppliers on the market who operate to the highest environmental standards.



# OCEANIC

A strikingly contemporary fabric with an intricate twill weave. Oceanic is made entirely from recycled plastic removed from the sea and shores.

OOC03



<b>Manufacturer</b>	Camira
<b>Price Group</b>	1
<b>Composition</b>	100% post-consumer recycled polyester, including 50% SEAQUAL yarn
<b>Environment</b>	Certified to OEKO-TEX® Standard 100 Certified to Indoor Advantage™ Gold Made from 100% post-consumer recycled polyester Nonmetallic dyestuffs
<b>Abrasion resistance</b>	Heavy duty / 10 year guarantee Independently certified to $\geq 100.000$ Martindale cycles
<b>Weight</b>	497g/m <sup>2</sup> $\pm 5\%$ (696g/lin.m $\pm 5\%$ )
<b>Fastness to rubbing</b>	Wet: 4, Dry: 4 (ISO 105 - X12)
<b>Lightfastness</b>	5 (ISO 105 - B02) OOC16: 4/5 (ISO 105 - B02)
<b>Flammability</b>	EN 1021 - 1 (cigarette) EN 1021 - 2 (match) BS 7176 Low Hazard Note: Flammability performance is dependent on components used. Our certificates show what substrates have been used in our tests. For composite tests customers must ensure their complete furniture meets the necessary standards.

Textiles Oceanic



FLOTSAM

OOC01



JETSAM

OOC02



COAST

OOC03



SEA

OOC04



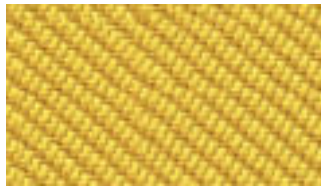
CORAL

OOC05



ATOLL

OOC06



BARRIER

OOC07



BAY

OOC08



SHORE

OOC09



ABYSS

OOC10



NEPTUNE

OOC11



AQUATIC

OOC12



PADDLE

OOC13



RIPTIDE

OOC14



GULF

OOC15



SEAFARER

OOC16

## AQUARIUS

A versatile crêpe weave fabric that is suitable for task chairs and lounge seating. Made from 100% natural wool, which is not only rapidly renewable but also fully biodegradable.

CHERRY JA419

<b>Manufacturer</b>	Camira
<b>Price Group</b>	1
<b>Composition</b>	100% virgin wool
<b>Environment</b>	Certified to Indoor Advantage™ "Gold" Rapidly renewable and compostable Nonmetallic dyestuffs
<b>Abrasion resistance</b>	Heavy duty / 10 year guarantee. Independently certified to ≥50.000 Martindale cycles
<b>Weight</b>	370 g/m2 ±5%
<b>Fastness to rubbing</b>	Wet: 4, Dry: 4 (ISO 105 - X12)
<b>Lightfastness</b>	5 (ISO 105 - B02)
<b>Flammability</b>	EN 1021-1&2 Cigarette & Match BS 7176 Low Hazard UNI 9175 Classe 1 IM BS 5852 Ignition Source 5 when FR treated BS 7176 Medium Hazard when FR treated BS 5867-2 Type B Curtains & Drapes when FR treated

Textiles Aquarius



HERON JA001



PITCH JA002



MARINER JA016



RHINO JA022



PORCELAIN JA024



JEZEBEL JA027



PADERBORN JA047



BISCAY JA059



VERMILLION JA062



AMBER JA068



SWART JA069



POISON JA084



MUSHROOM JA125



PURPLE JA157



SMURF JA159



TAMBOURINE JA183



MANTA JA194



COURGETTE JA201



CERES JA409



ARISTOTLE JA416



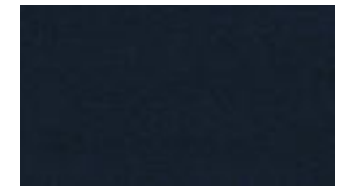
CHERRY JA419



ZIPPY JA426



CIRCUS JA428



VICO JA435



TOMBOLA JA442



CHOMSKY JA443



SPINOZA JA448

# REMIX 3

Remix 3 is an elegant upholstery textile distinguished by exceptional depth of colour, designed by Giulio Ridolfo.

Remix 3 looks unicoloured from a distance but reveals subtle details and colour contrasts when viewed close-up. The textile features a tight, minimalistic weave, and derives its lively colour play from a combination of two different mélange yarns, which each combine up to three hues.



REMIX 3, 0412

<b>Category</b>	Kvadrat upholstery
<b>Price Group</b>	2
<b>Pattern</b>	Solid
<b>Composition</b>	90% new wool worsted, 10% nylon
<b>Width</b>	Approx. 140 cm (Approx. 55")
<b>Weight</b>	420 g/lin. m (13.55 oz/ly)
<b>Repeat</b>	Approx. 0/0 cm (Approx. 0"/0")
<b>Durability</b>	100,000 Martindale
<b>Pilling</b>	4 (ISO 1-5)
<b>Lightfastness</b>	6
<b>Fire Tests</b>	AS/NZS 1530.3 • BS 5852 crib 5 with treatment • BS 5852 part 1 • IMO FTP Code 2010 Part 7 with treatment • IMO FTP Code 2010 Part 8 • NF D 60 013 • NFPA 260 • SN 198 898 5.3 with treatment • UNI 9175 1IM • US Cal. Bull. 117-2013 • EN 1021-1/2 • AS/NZS 3837 class 2 • ÖNORM B1/Q1 • ASTM E84 Class A Unadhered • ASTM E84 Class A Adhered • GB 50222 B1 with treatment (Chinese)
<b>Fastness to rubbing</b>	4 (Dry) 4 (Wet)
<b>Airflow</b>	465 Pa s/m
<b>Absorption</b>	0.55/Class D (Absorption flat) 0.80/Class B (Absorption folded))
<b>Seam Slippage</b>	5 mm (warp), 3 mm (weft)



Textiles Remix 3



REMIX 3 0113



REMIX 3 0123



REMIX 3 0126



REMIX 3 0133



REMIX 3 0136



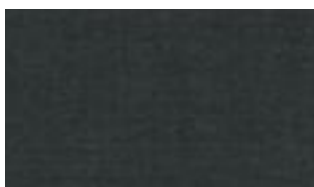
REMIX 3 0143



REMIX 3 0152



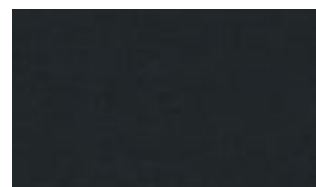
REMIX 3 0163



REMIX 3 0173



REMIX 3 0183



REMIX 3 0196



REMIX 3 0223



REMIX 3 0233



REMIX 3 0242



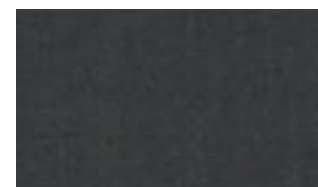
REMIX 3 0252



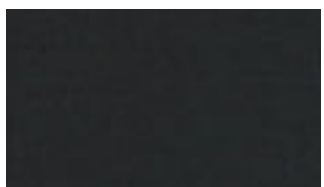
REMIX 3 0266



REMIX 3 0276



REMIX 3 0286



REMIX 3 0296



REMIX 3 0326



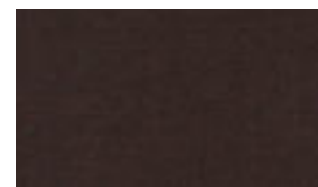
REMIX 3 0346



REMIX 3 0356



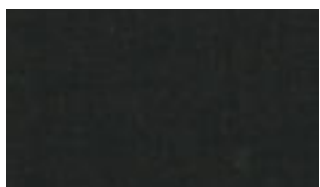
REMIX 3 0362



REMIX 3 0373



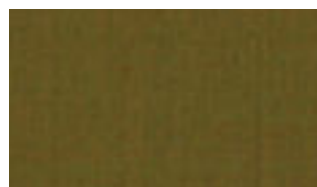
REMIX 3 0383



REMIX 3 0393



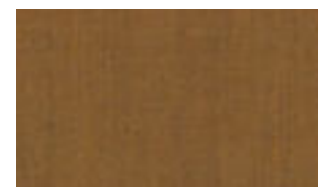
REMIX 3 0406



REMIX 3 0412



REMIX 3 0422



REMIX 3 0433

Textiles Remix 3



REMIX 3 0443



REMIX 3 0452



REMIX 3 0516



REMIX 3 0536



REMIX 3 0543



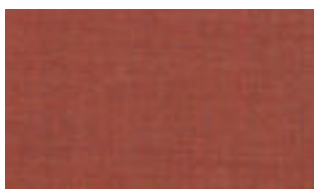
REMIX 3 0566



REMIX 3 0606



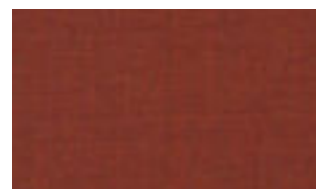
REMIX 3 0612



REMIX 3 0632



REMIX 3 0643



REMIX 3 0653



REMIX 3 0662



REMIX 3 0672



REMIX 3 0682



REMIX 3 0686



REMIX 3 0692



REMIX 3 0716



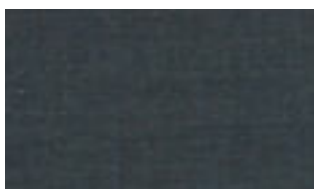
REMIX 3 0722



REMIX 3 0733



REMIX 3 0743



REMIX 3 0753



REMIX 3 0762



REMIX 3 0773



REMIX 3 0783



REMIX 3 0796



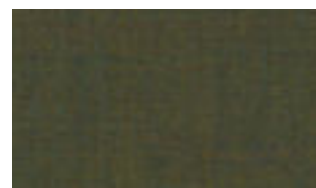
REMIX 3 0816



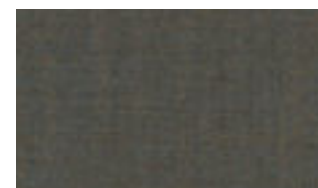
REMIX 3 0823



REMIX 3 0836



REMIX 3 0842



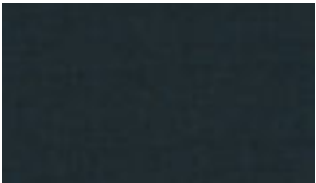
REMIX 3 0852

Textiles Remix 3



REMIX 3

0866



REMIX 3

0873



REMIX 3

0906



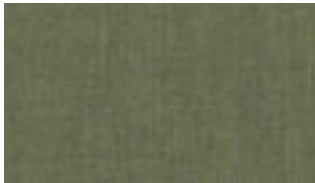
REMIX 3

0912



REMIX 3

0923



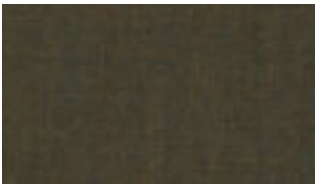
REMIX 3

0933



REMIX 3

0942



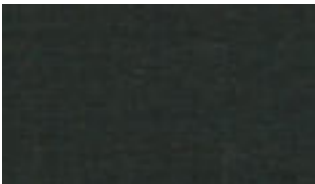
REMIX 3

0954



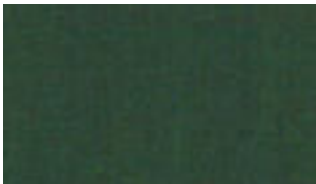
REMIX 3

0962



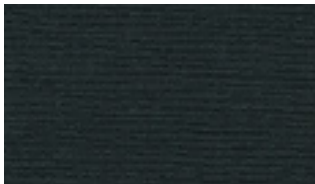
REMIX 3

0973



REMIX 3

0982



REMIX 3

0996



## MAIN LINE FLAX

An inherently flame retardant fabric made from sustainable sources and woven into interesting solids and cross-colors inspired by the rich tones of rare jewels.

UPMINSTER, MLF20



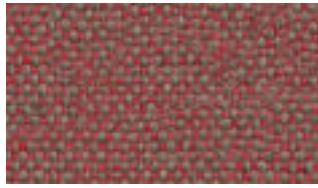
HOLBORN, MLF05

<b>Manufacturer</b>	Camira
<b>Price Group</b>	2
<b>Composition</b>	70% virgin wool, 30% flax
<b>Environment</b>	Certified to the EU Ecolabel Certified to Indoor Advantage™ "Gold" Rapidly renewable and compostable Made from wool and bast fiber
<b>Martindale</b>	Heavy duty / 10 year guarantee Independently certified to ≥50.000 Martindale cycles
<b>Weight</b>	437 g/m2 ±5%
<b>Fastness to rubbing</b>	Wet: 3, Dry: 4 (ISO 105 - X12)
<b>Lightfastness</b>	5 (ISO 105 - B02)
<b>Flammability</b>	EN 1021-1&2 Cigarette & Match BS 7176 Low Hazard BS 5852 Ignition Source 5 BS 7176 Medium Hazard NF D 60-013 ÖNORM B 3825 & A 3800-1 (58kg/m3 CMHR Foam) UNI 9175 Classe 1 IM BS 5867-2: Type B Curtains & Drapes

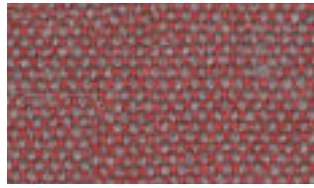
Textiles Main Line Flax



ALDGATE MLF01



ARCHWAY MLF02



BARBICAN MLF03



HOLBORN MLF05



KILBURN MLF06



KENSINGTON MLF07



LAMBETH MLF08



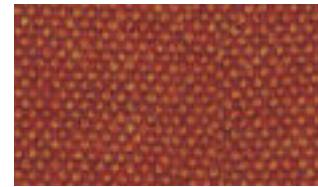
MONUMENT MLF09



NEWBURY MLF10



MORDEN MLF12



LEYTON MLF13



PARSONS MLF14



STOCKWELL MLF15



TEMPLE MLF16



TOOTING MLF17



TUFNELL MLF18



VICTORIA MLF19



UPMINSTER MLF20



WATERLOO MLF21



WESTMINSTER MLF22



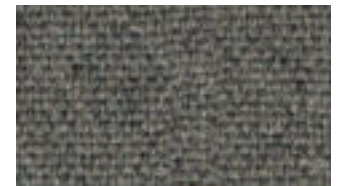
BANK MLF23



BAYSWATER MLF24



BETHNAL MLF25



CAMDEN MLF26



EDGWARE MLF28



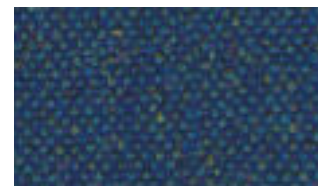
FARRINGDON MLF29



GOLDHAWK MLF31



GREENFORD MLF32



PIMLICO MLF34

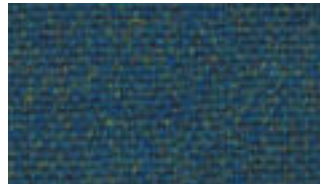


BROMPTON MLF35

Textiles Main Line Flax



TOWER MLF36



STANMORE MLF37



NORTHFIELDS MLF40



ALPERTON MLF43



BALHAM MLF44



BARKING MLF45



BLACKWALL MLF46



BRIXTON MLF47



CHIGWELL MLF48



CLAPHAM MLF49



EMBANKMENT MLF50



EPPING MLF51



GREENWICH MLF52



HAMPSTEAD MLF53



HARROW MLF54



HORNCHURCH MLF55



KENTISH MLF56



MOORGATE MLF57



PERIVALE MLF59



PINNER MLF60



REDBRIDGE MLF61



RICHMOND MLF62



SHADWELL MLF63



STRATFORD MLF64



WATFORD MLF65



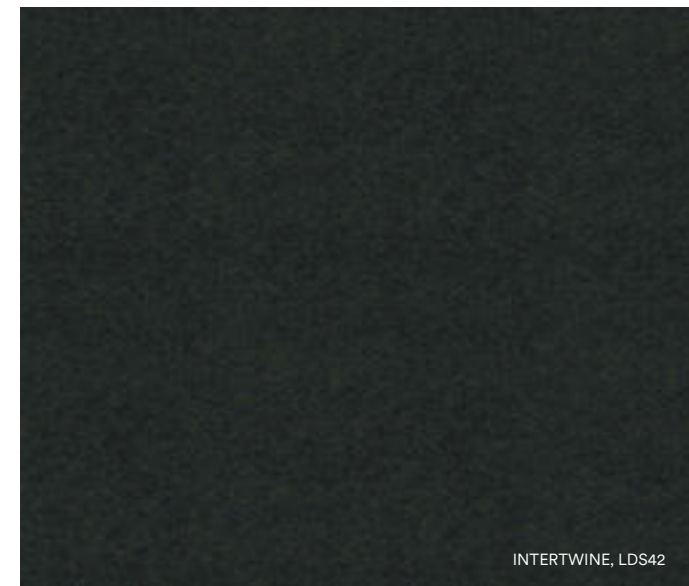
WHITECHAPEL MLF66



WOODFORD MLF67

# SYNERGY

A soft handle wool blend fabric featuring exquisite fiber dyed shades and sumptuous piece dyed solids.



INTERTWINE, LDS42

<b>Manufacturer</b>	Camira
<b>Price Group</b>	2
<b>Composition</b>	95% virgin wool, 5% polyamide
<b>Environment</b>	Certified to the EU Ecolabel Certified to Indoor Advantage™ "Gold"
<b>Abrasion resistance</b>	Heavy duty / 10 year guarantee Independently certified to $\geq 100.000$ Martindale cycles
<b>Weight</b>	400 g/m <sup>2</sup> $\pm 5\%$
<b>Fastness to rubbing</b>	Wet: 3, Dry: 4 (ISO 105 - X12)
<b>Lightfastness</b>	5 (ISO 105 - B02)
<b>Flammability</b>	EN 1021 - 1&2 Cigarette & Match BS 7176 Low Hazard NF D 60-013 ÖNORM B 3825 & A 3800-1 (58 kg/m <sup>3</sup> CMHR Foam) UNI 9175 Classe 1 IM EN 13501-1 Adhered Class D, s1, d0 EN 13501-1 Un-adhered Class E, s2, d0 BS 5852 Ignition Source 5 when FR treated BS 7176 Medium Hazard when FR treated EN 13501-1 Adhered Class B, s1, d0 when FR treated EN 13501-1 Un-adhered Class D, s2, d0 when FR treated BS 5867-2: Type B Curtains & Drapes when FR treated



Textiles Synergy



VENTURE LDS05



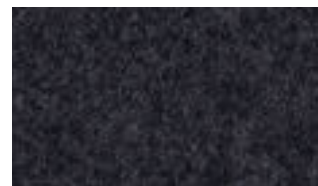
FATE LDS07



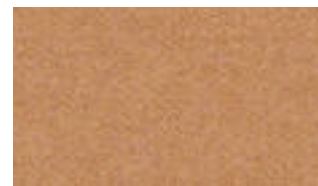
SERENDIPITY LDS08



PARTNER LDS16



MIX LDS17



LOOP LDS18



CHAIN LDS19



LEVEL LDS20



TEAM LDS21



FRAME LDS22



BRACKET LDS23



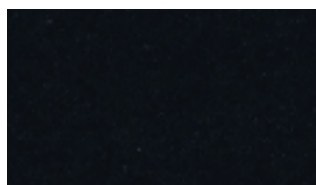
BOND LDS24



COMPOUND LDS25



BRIDGE LDS26



SEEK LDS27



LATERAL LDS28



HOOK LDS29



PAIR LDS31



AFFIX LDS32



TAG LDS33



WED LDS34



CHEMISTRY LDS35



MEDLEY LDS36



LINEA LDS37



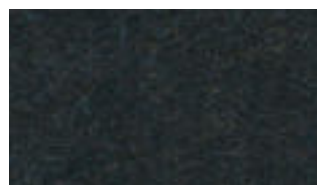
UNITY LDS38



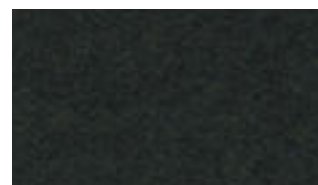
COLLECTIVE LDS39



CO-OPERATE LDS40



COUPLE LDS41



INTERTWINE LDS42



MARRY LDS43

Textiles Synergy



RELATE LDS44



SUMMON LDS45



GATHER LDS46



INTEGRATE LDS47



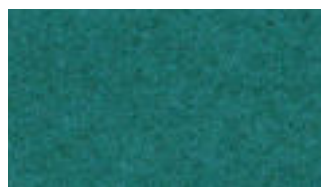
INTERFUSE LDS48



APPEND LDS49



LEAGUE LDS50



KINDNESS LDS51



COMPLY LDS52



PACT LDS53



REGARD LDS54



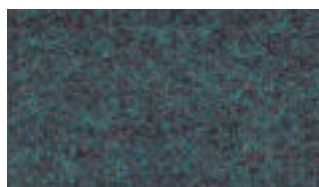
SUPPORT LDS55



KINSHIP LDS56



ENGAGE LDS57



FAMILY LDS58



GROUP LDS59



ACCORD LDS60



ASSEMBLE LDS61



ALIKE LDS62



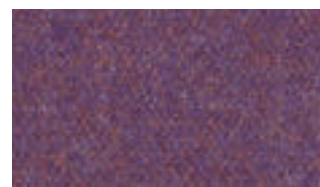
GUILD LDS63



ORDER LDS64



HUDDLE LDS65



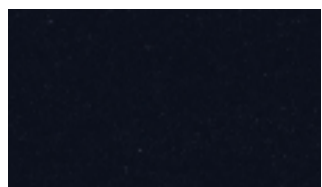
FELLOWSHIP LDS66



WARMTH LDS67



COLLABORATE LDS68



SYNC LDS69



TOGETHER LDS70



OPEN LDS71

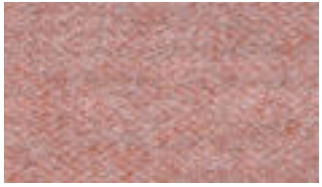


COMPOSE LDS72



WORK LDS73

Textiles Synergy



**AFFINITY**

LDS74



**CONTRIBUTION**

LDS75



**SUCCESS**

LDS76



**COMBO**

LDS77



**CORDIAL**

LDS78



**AMIABLE**

LDS79



**APT**

LDS80



**SIMILAR**

LDS81



**LIKENESS**

LDS82



**CONGREGATE**

LDS83



**MUTUAL**

LDS84



**SHARE**

LDS85



**GLOBAL**

LDS86



**VALUES**

LDS87



**PROCESS**

LDS88



## CANVAS 2

Canvas is a vibrant woollen upholstery textile created by Giulio Ridolfo.



<b>Category</b>	Kvadrat upholstery
<b>Price Group</b>	3
<b>Pattern</b>	Solid
<b>Composition</b>	90% new wool worsted, 10% nylon
<b>Width</b>	Approx. 140 cm (Approx. 55")
<b>Weight</b>	480 g/lin. m (15.48 oz/ly)
<b>Repeat</b>	Approx. 0/0 cm (Approx. 0"/0")
<b>Durability</b>	100,000 Martindale
<b>Pilling</b>	4 (ISO 1-5)
<b>Lightfastness</b>	5-6
<b>Fire Tests</b>	AS/NZS 1530.3 • BS 5852 crib 5 with treatment • BS 5852 part 1 • IMO FTP Code 2010 Part 8 • NF D 60 013 • NFPA 260 • SN 198 898 5.3 with treatment • UNI 9175 1IM • US Cal. Bull. 117-2013 • EN 1021-1/2 • ÖNORM B1/Q1 • ASTM E84 Class A Adhered • ASTM E84 Class A Unadhered
<b>Fastness to rubbing</b>	4-5 (Dry) 4-5 (Wet)
<b>Airflow</b>	849 Pa s/m
<b>Absorption</b>	0.60/Class C (Absorption flat) 0.80/Class B (Absorption folded)
<b>Seam Slippage</b>	3.5 mm (warp), 2 mm (weft)

Textiles Canvas 2



CANVAS 2 0114



CANVAS 2 0124



CANVAS 2 0134



CANVAS 2 0154



CANVAS 2 0174



CANVAS 2 0216



CANVAS 2 0224



CANVAS 2 0244



CANVAS 2 0254



CANVAS 2 0264



CANVAS 2 0356



CANVAS 2 0364



CANVAS 2 0374



CANVAS 2 0414



CANVAS 2 0424



CANVAS 2 0446



CANVAS 2 0454



CANVAS 2 0546



CANVAS 2 0556



CANVAS 2 0566



CANVAS 2 0576



CANVAS 2 0614



CANVAS 2 0644



CANVAS 2 0654



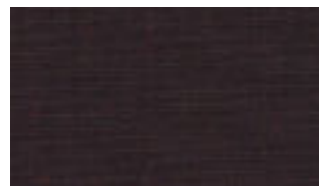
CANVAS 2 0666



CANVAS 2 0674



CANVAS 2 0684



CANVAS 2 0694



CANVAS 2 0716



CANVAS 2 0726

Textiles Canvas 2



CANVAS 2 0734



CANVAS 2 0746



CANVAS 2 0754



CANVAS 2 0786



CANVAS 2 0794



CANVAS 2 0836



CANVAS 2 0854



CANVAS 2 0926



CANVAS 2 0936



CANVAS 2 0946



CANVAS 2 0954



CANVAS 2 0964



CANVAS 2 0974



CANVAS 2 0984



CANVAS 2 0996



Swell Modular Sofa in Hallingdal 65, 0110



## YOREDALE

A highly textured textile with undulations reflective of its Yorkshire roots, its fascinating bouclé style yarn features a contrasting black binder that brings depth to its saturated tones.



<b>Manufacturer</b>	Camira
<b>Price Group</b>	3
<b>Composition</b>	95% wool, 3% polyester, 2% polyamide
<b>Environment</b>	Certified to Indoor Advantage™ "Gold" Nonmetallic dyestuffs
<b>Abrasion resistance</b>	Heavy duty / 10 year guarantee. Independently certified to ≥50.000 Martindale cycles
<b>Weight</b>	700 g/m2 ±5%
<b>Fastness to rubbing</b>	Wet: 4, Dry: 4 (ISO 105 - X12)
<b>Lightfastness</b>	5 (ISO 105 - B02)
<b>Flammability</b>	EN 1021 - 1&2 Cigarette & Match BS 7176 Low Hazard ÖNORM B 3825 & A 3800-1 (58kg/m3 CMHR Foam) UNI 9175 Classe 1 IM BS 5852 Ignition Source 5 when FR treated BS 7176 Medium Hazard when FR treated

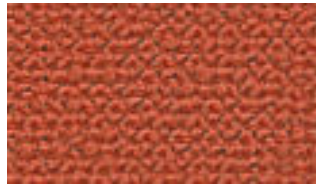
Textiles Yoredale



BUCKDEN UDA01



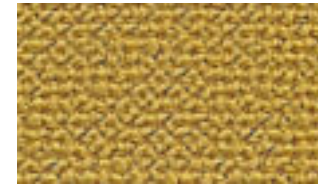
KIDSTONE UDA02



ASKRIGG UDA03



HARDRAW UDA04



SIMONSTONE UDA05



THORALBY UDA06



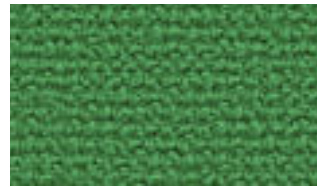
CARPERBY UDA07



GAYLE UDA08



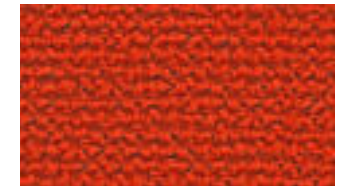
THORNTON UDA09



CRAY UDA10



FOSSDALE UDA11



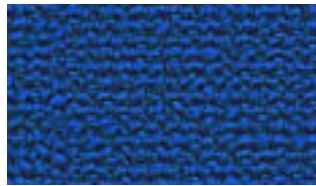
WOODALE UDA12



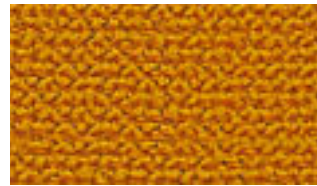
WALDEN UDA13



SEDBUSK UDA14



LITTON UDA15



NIDD UDA16



RIBBLE UDA17



WHARFE UDA18



RIPLEY UDA19



DARLEY UDA20



DACRE UDA21



BURNSALL UDA22



CRACOE UDA23



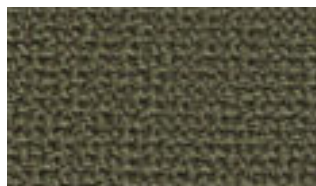
WODEN UDA24



LEYBURN UDA25



GRASSINGTON UDA27



BRONTE UDA28



GORDALE UDA29



HORTON UDA30



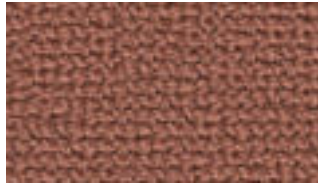
ILKLEY UDA31

Textiles Yoredale



**INGLETON**

UDA32



**KETTLEWELL**

UDA33



**MALHAM**

UDA34



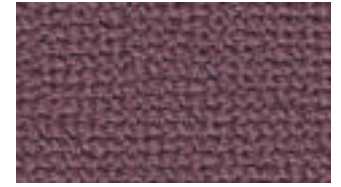
**MARSDEN**

UDA35



**SETTLE**

UDA36



**SKIPTON**

UDA37



**SWALEDALE**

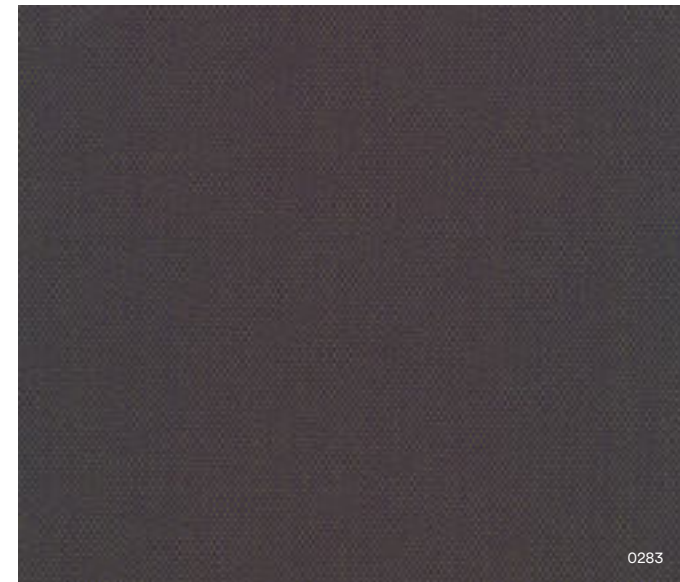
UDA38

## STEELCUT TRIO 3

The three-dimensional surface of Steelcut Trio resembles small pyramids or steel points. Despite the complexity of the textile's innovative weave, it has a simple, precise expression. Steelcut Trio is yarn-dyed and made from 3 differently coloured yarns.



0713



0283

<b>Category</b>	Kvadrat upholstery
<b>Price Group</b>	4
<b>Pattern</b>	Solid
<b>Composition</b>	90% new wool worsted, 10% nylon
<b>Width</b>	Approx. 140 cm (Approx. 55")
<b>Weight</b>	770 g/lin. m (24.84 oz/ly)
<b>Repeat</b>	Approx. 0/0 cm (Approx. 0"/0")
<b>Durability</b>	100,000 Martindale
<b>Pilling</b>	4 (ISO 1-5)
<b>Lightfastness</b>	6-7
<b>Fire Tests</b>	AS/NZS 1530.3 • BS 5852 crib 5 with treatment • BS 5852 part 1 • IMO FTP Code 2010 Part 8 • NF D 60 013 • NFPA 260 • SN 198 898 5.3 with treatment • UNI 9175 11M • US Cal. Bull. 117-2013 • EN 1021-1/2 • ASTM E84 Class B Unadhered • ASTM E84 Class B Adhered • ÖNORM B1/Q1 • AS/NZS 3837 class 2 • GB 50222 B1 with treatment (Chinese)
<b>Fastness to rubbing</b>	4-5 (Dry) 4-5 (Wet)
<b>Airflow</b>	910 Pa s/m
<b>Absorption</b>	0.70/Class C (Absorption flat) 0.95/Class A (Absorption folded)
<b>Seam Slippage</b>	3.5 mm (warp), 2 mm (weft)

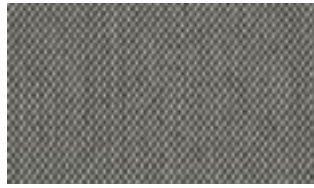
Textiles Steelcut Trio 3



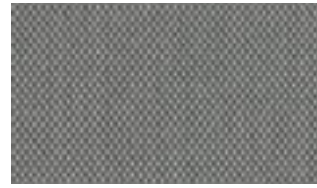
STEELCUT TRIO 3 0105



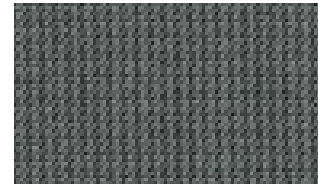
STEELCUT TRIO 3 0113



STEELCUT TRIO 3 0124



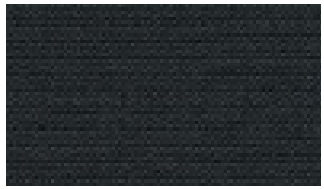
STEELCUT TRIO 3 0133



STEELCUT TRIO 3 0153



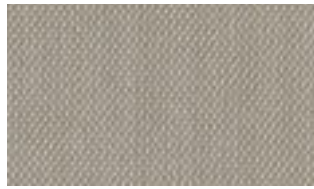
STEELCUT TRIO 3 0176



STEELCUT TRIO 3 0195



STEELCUT TRIO 3 0205



STEELCUT TRIO 3 0213



STEELCUT TRIO 3 0226



STEELCUT TRIO 3 0236



STEELCUT TRIO 3 0246



STEELCUT TRIO 3 0253



STEELCUT TRIO 3 0266



STEELCUT TRIO 3 0276



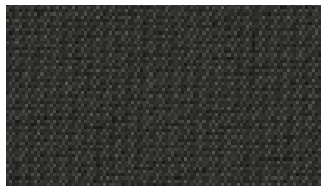
STEELCUT TRIO 3 0283



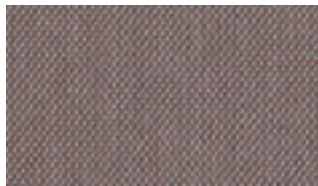
STEELCUT TRIO 3 0336



STEELCUT TRIO 3 0376



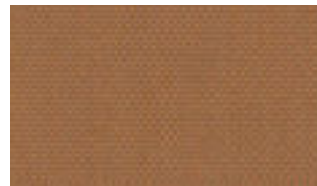
STEELCUT TRIO 3 0383



STEELCUT TRIO 3 0416



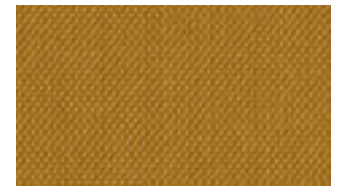
STEELCUT TRIO 3 0426



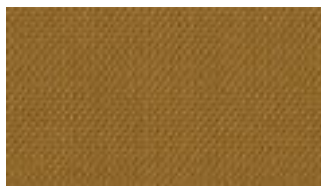
STEELCUT TRIO 3 0436



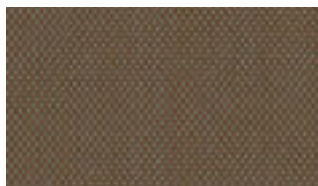
STEELCUT TRIO 3 0446



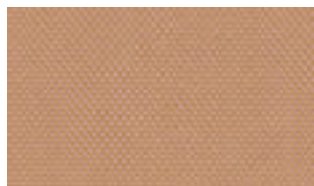
STEELCUT TRIO 3 0453



STEELCUT TRIO 3 0466



STEELCUT TRIO 3 0476



STEELCUT TRIO 3 0506



STEELCUT TRIO 3 0515

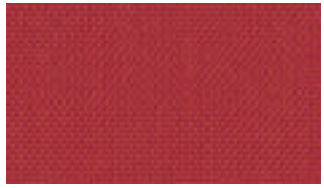


STEELCUT TRIO 3 0526



STEELCUT TRIO 3 0533

Textiles Steelcut Trio 3



STEELCUT TRIO 3

0553



STEELCUT TRIO 3

0576



STEELCUT TRIO 3

0616



STEELCUT TRIO 3

0636



STEELCUT TRIO 3

0645



STEELCUT TRIO 3

0666



STEELCUT TRIO 3

0686



STEELCUT TRIO 3

0713



STEELCUT TRIO 3

0716



STEELCUT TRIO 3

0746



STEELCUT TRIO 3

0756



STEELCUT TRIO 3

0776



STEELCUT TRIO 3

0796



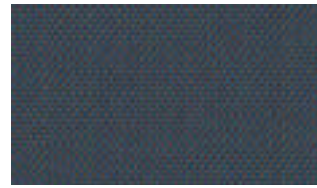
STEELCUT TRIO 3

0806



STEELCUT TRIO 3

0865



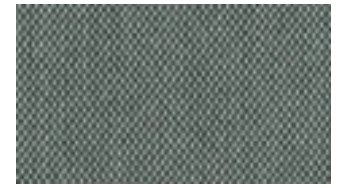
STEELCUT TRIO 3

0883



STEELCUT TRIO 3

0906



STEELCUT TRIO 3

0916



STEELCUT TRIO 3

0946



STEELCUT TRIO 3

0966



STEELCUT TRIO 3

0976



STEELCUT TRIO 3

0983



STEELCUT TRIO 3

0996



Rope Modular Sofa in Main Line Flax, Upminster MLF20

## CITY VELVET

A beautiful lush velvet quality. Each color highlights the shimmering surface of the woven velour and adds a touch of soft decadence.

CA7832, 024



CA7832, 073

<b>Manufacturer</b>	JAB
<b>Price Group</b>	4
<b>Composition</b>	Pile: 100% polyester Groundmaterial: 100% polyester
<b>Abrasion resistance</b>	100.000 Martindale
<b>Weight</b>	440 g/m2
<b>Lightfastness</b>	3-5



Textiles City Velvet



CA7832

010



CA7832

011



CA7832

012



CA7832

013



CA7832

014



CA7832

015



CA7832

020



CA7832

021



CA7832

022



CA7832

023



CA7832

024



CA7832

025



CA7832

026



CA7832

027



CA7832

030



CA7832

031



CA7832

032



CA7832

033



CA7832

034



CA7832

035



CA7832

036



CA7832

037



CA7832

038



CA7832

039



CA7832

040



CA7832

041



CA7832

042



CA7832

043



CA7832

050



CA7832

051

Textiles City Velvet



CA7832 052



CA7832 053



CA7832 055



CA7832 056



CA7832 058



CA7832 060



CA7832 061



CA7832 062



CA7832 063



CA7832 064



CA7832 065



CA7832 066



CA7832 069



CA7832 070



CA7832 071



CA7832 072



CA7832 073



CA7832 074



CA7832 075



CA7832 076



CA7832 077



CA7832 078



CA7832 079



CA7832 080



CA7832 081



CA7832 082



CA7832 083



CA7832 084



CA7832 085



CA7832 086

Textiles City Velvet



CA7832

087



CA7832

088



CA7832

089



CA7832

090



CA7832

091



CA7832

092



CA7832

093



CA7832

094



CA7832

095



CA7832

096



CA7832

099



CA7832

126



CA7832

130



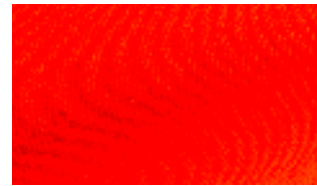
CA7832

160



CA7832

161



CA7832

162



CA7832

165



CA7832

170



CA7832

180



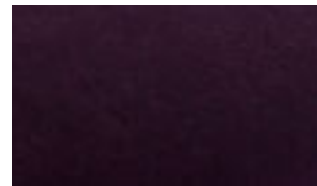
CA7832

181



CA7832

184



CA7832

186



CA7832

234



CA7832

263



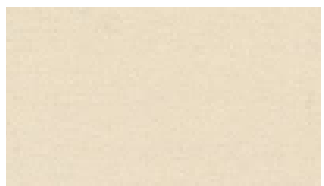
## DIVINA 3

Divina is a full-cloth product, which means that it is manufactured by weaving the yarn in a coarse linen hose casing, after which, it is subjected to mechanical processing using very high temperatures, at the same time as it is being coloured. This creates a situation where the surface becomes smooth, directionless and uniform in a manner very similar to the properties of felt.

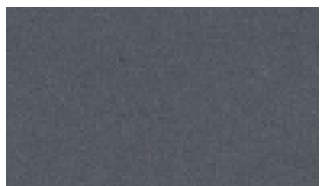


<b>Category</b>	Kvadrat upholstery
<b>Price Group</b>	5
<b>Pattern</b>	Solid
<b>Composition</b>	100% new wool
<b>Width</b>	Approx. 150 cm (Approx. 59")
<b>Weight</b>	840 g/lin. m (27.09 oz/ly)
<b>Repeat</b>	Approx. 0/0 cm (Approx. 0"/0")
<b>Durability</b>	45,000 Martindale
<b>Pilling</b>	3 (ISO 1-5)
<b>Lightfastness</b>	5-6
<b>Fire Tests</b>	AS/NZS 1530.3 • BS 5852 Crib 5 • BS 5852 part 1 • BS 5867 part 2 type B • IMO FTP Code 2010 Part 8 • NF D 60 013 • NFPA 260 • SN 198 898 5.3 with treatment • UNI 9175 1IM • US Cal. Bull. 117-2013 • EN 1021-1/2 • EN 13501, C-s1, d0, glued • NFPA 701 with treatment • ASTM E84 Class B Unadhered • ASTM E84 Class A Adhered • ÖNORM B1/Q1 • GB 50222 B1 with treatment (Chinese)
<b>Fastness to rubbing</b>	4-5 (Dry) 4-5 (Wet)
<b>Airflow</b>	678 Pa s/m
<b>Absorption</b>	0.60/Class C (Absorption flat) 0.70/Class C (Absorption folded)
<b>Seam Slippage</b>	2 mm (warp), 2 mm (weft)

Textiles Divina 3



DIVINA 3 0120



DIVINA 3 0154



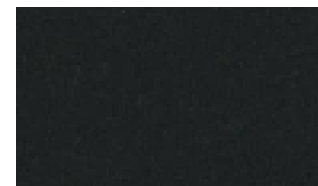
DIVINA 3 0171



DIVINA 3 0173



DIVINA 3 0181



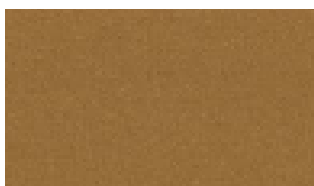
DIVINA 3 0191



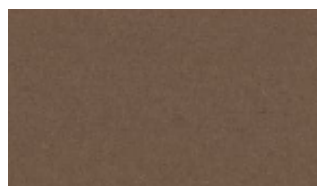
DIVINA 3 0224



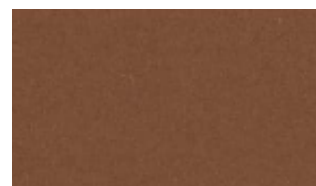
DIVINA 3 0236



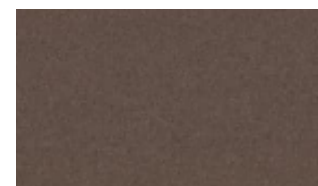
DIVINA 3 0246



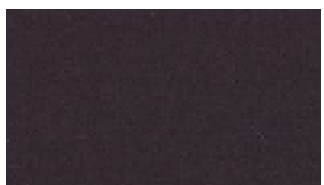
DIVINA 3 0334



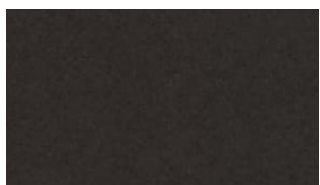
DIVINA 3 0346



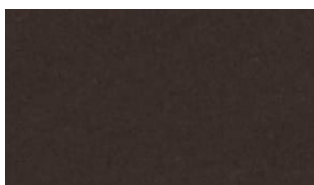
DIVINA 3 0356



DIVINA 3 0376



DIVINA 3 0384



DIVINA 3 0393



DIVINA 3 0426



DIVINA 3 0444



DIVINA 3 0462



DIVINA 3 0526



DIVINA 3 0536



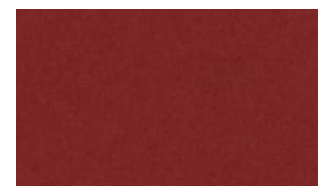
DIVINA 3 0542



DIVINA 3 0552



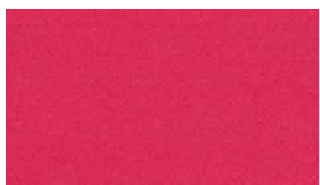
DIVINA 3 0562



DIVINA 3 0584



DIVINA 3 0623



DIVINA 3 0626



DIVINA 3 0636



DIVINA 3 0652



DIVINA 3 0662



DIVINA 3 0666

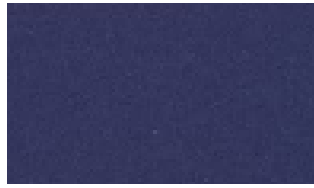
Textiles Divina 3



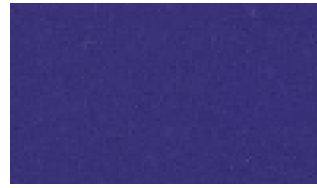
DIVINA 3 0671



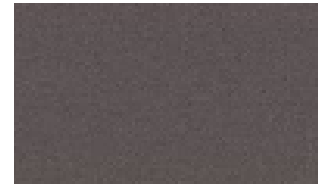
DIVINA 3 0676



DIVINA 3 0684



DIVINA 3 0686



DIVINA 3 0691



DIVINA 3 0692



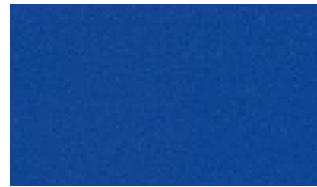
DIVINA 3 0696



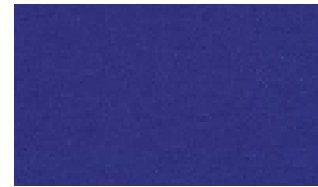
DIVINA 3 0712



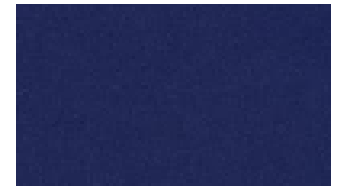
DIVINA 3 0742



DIVINA 3 0756



DIVINA 3 0782



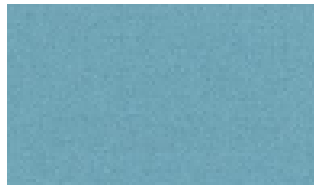
DIVINA 3 0791



DIVINA 3 0793



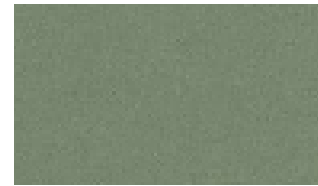
DIVINA 3 0826



DIVINA 3 0836



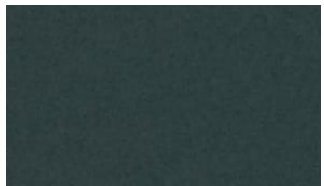
DIVINA 3 0846



DIVINA 3 0856



DIVINA 3 0876



DIVINA 3 0886



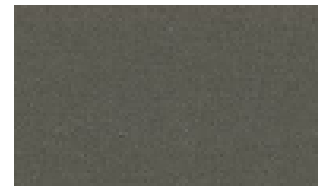
DIVINA 3 0853



DIVINA 3 0922



DIVINA 3 0936



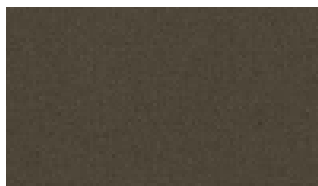
DIVINA 3 0944



DIVINA 3 0956



DIVINA 3 0966



DIVINA 3 0984

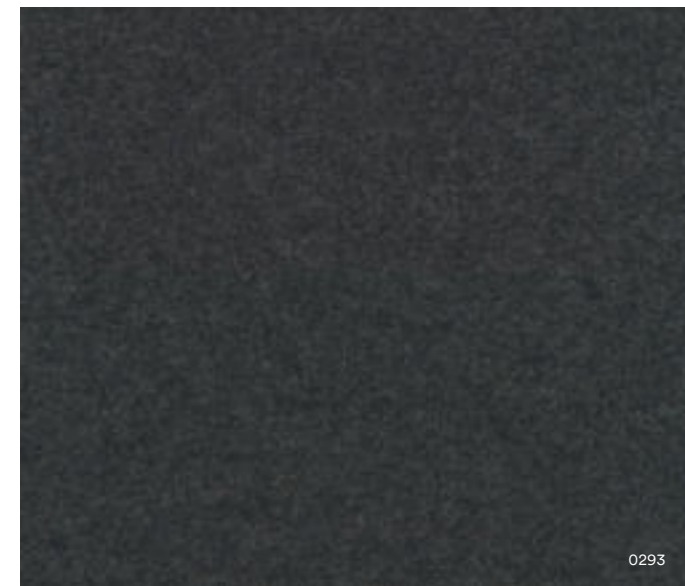






## DIVINA MD

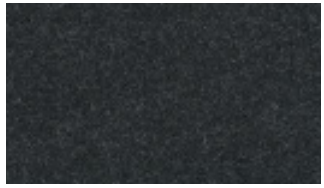
Divina MD is an upholstery textile designed by Finn Sködt. Available in sophisticated, rich colours, which reveal hidden depths as the perspective of the viewer changes, it makes a strong colour statement.



0293

<b>Category</b>	Kvadrat upholstery
<b>Price Group</b>	5
<b>Pattern</b>	Solid
<b>Composition</b>	100% new wool
<b>Width</b>	Approx. 150 cm (Approx. 59")
<b>Weight</b>	840 g/lin. m (27.09 oz/ly)
<b>Repeat</b>	Approx. 0/0 cm (Approx. 0"/0")
<b>Durability</b>	45,000 Martindale
<b>Pilling</b>	3 (ISO 1-5)
<b>Lightfastness</b>	5-6 (ISO 1-8)
<b>Fire Tests</b>	AS/NZS 1530.3 • BS 5852 Crib 5 • BS 5852 part 1 • BS 5867 part 2 type B • IMO FTP Code 2010 Part 8 • NF D 60 013 • NFPA 260 • SN 198 898 5.3 with treatment • UNI 9175 1IM • US Cal. Bull. 117-2013 • EN 1021-1/2 • EN 13501, C-s1, d0, glued • NFPA 701 with treatment • ASTM E84 Class B Unadhered • ASTM E84 Class A Adhered • ÖNORM B1/Q1 • GB 50222 B1 with treatment (Chinese) (Chinese)
<b>Fastness to rubbing</b>	4-5 (Dry) 4-5 (Wet)
<b>Airflow</b>	678 Pa s/m
<b>Absorption</b>	0.60/Class C (Absorption flat) 0.70/Class C (Absorption folded)
<b>Seam Slippage</b>	2 mm (warp), 2 mm (weft)

Textiles Divina MD



DIVINA MD 0193



DIVINA MD 0203



DIVINA MD 0213



DIVINA MD 0293



DIVINA MD 0343



DIVINA MD 0353



DIVINA MD 0363



DIVINA MD 0413



DIVINA MD 0433



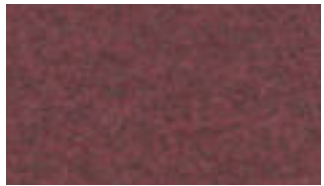
DIVINA MD 0453



DIVINA MD 0613



DIVINA MD 0633



DIVINA MD 0653



DIVINA MD 0673



DIVINA MD 0683



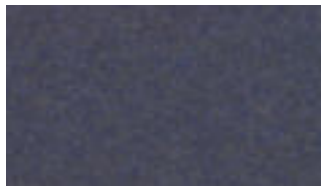
DIVINA MD 0713



DIVINA MD 0733



DIVINA MD 0743



DIVINA MD 0753



DIVINA MD 0773



DIVINA MD 0783



DIVINA MD 0813



DIVINA MD 0843



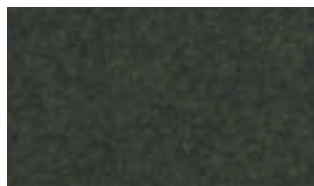
DIVINA MD 0873



DIVINA MD 0913



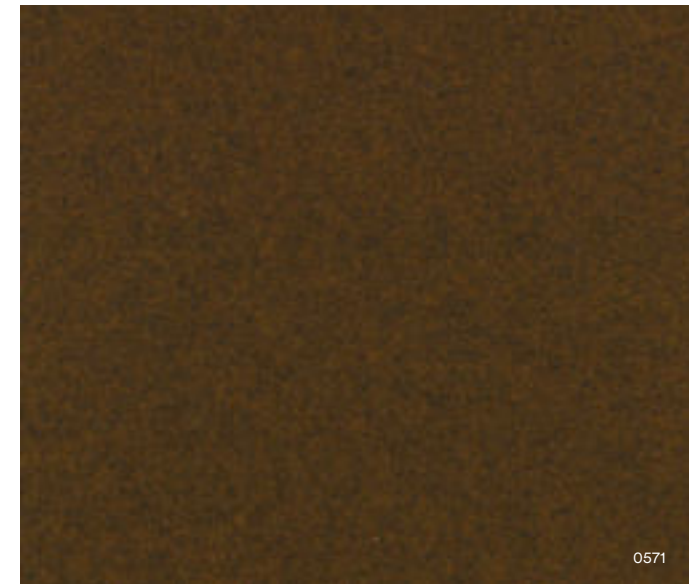
DIVINA MD 0943



DIVINA MD 0973

## DIVINA MELANGE 3

Divina Melange 3 is a vibrant piece-dyed woollen upholstery textile reminiscent of felt. Cheerfully simple, it comes in a fresh, versatile palette by artist and designer Finn Sködt.

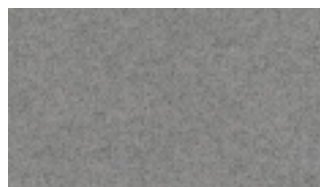


<b>Category</b>	Kvadrat upholstery
<b>Price Group</b>	5
<b>Pattern</b>	Solid
<b>Composition</b>	100% new wool
<b>Width</b>	Approx. 150 cm (Approx. 59")
<b>Weight</b>	840 g/lin. m (27.09 oz/ly)
<b>Repeat</b>	Approx. 0/0 cm (Approx. 0"/0")
<b>Durability</b>	45,000 Martindale
<b>Pilling</b>	3 (ISO 1-5)
<b>Lightfastness</b>	6-7
<b>Fire Tests</b>	AS/NZS 1530.3 • BS 5852 Crib 5 • BS 5852 part 1 • BS 5867 part 2 type B • IMO FTP Code 2010 Part 8 • NF D 60 013 • NFPA 260 • SN 198 898 5.3 with treatment • UNI 9175 1IM • US Cal. Bull. 117-2013 • EN 1021-1/2 • EN 13501, C-s1, d0, glued • Chinese GB 50222B1 with treatment • ÖNORM B1/Q1 • NFPA 701 with treatment • ASTM E84 Class B Unadhered • ASTM E84 Class A Adhered
<b>Fastness to rubbing</b>	5 (Dry) 3-4 (Wet)
<b>Airflow</b>	678 Pa s/m
<b>Absorption</b>	0.60/Class C (Absorption flat) 0.70/Class C (Absorption folded)
<b>Seam Slippage</b>	2 mm (warp), 2 mm (weft)

Textiles Divina Melange 3



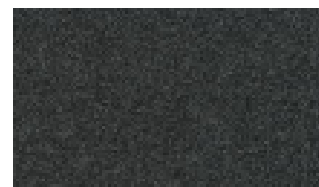
DIVINA MELANGE 3 0120



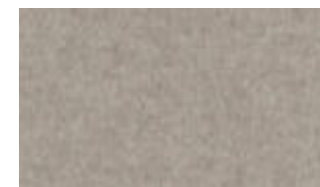
DIVINA MELANGE 3 0147



DIVINA MELANGE 3 0170



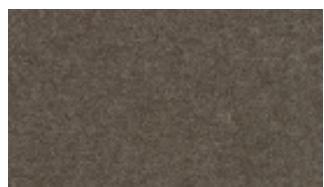
DIVINA MELANGE 3 0180



DIVINA MELANGE 3 0227



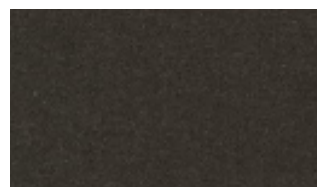
DIVINA MELANGE 3 0237



DIVINA MELANGE 3 0260



DIVINA MELANGE 3 0277



DIVINA MELANGE 3 0280



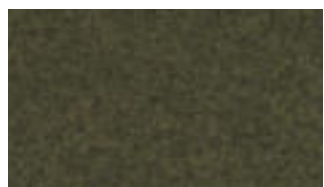
DIVINA MELANGE 3 0367



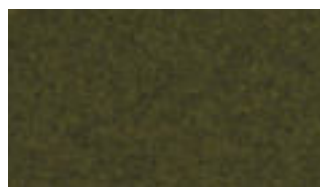
DIVINA MELANGE 3 0427



DIVINA MELANGE 3 0457



DIVINA MELANGE 3 0467



DIVINA MELANGE 3 0471



DIVINA MELANGE 3 0517



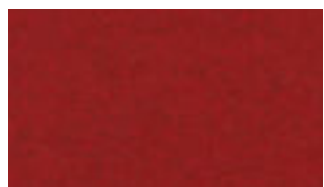
DIVINA MELANGE 3 0527



DIVINA MELANGE 3 0547



DIVINA MELANGE 3 0557



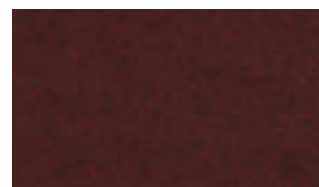
DIVINA MELANGE 3 0567



DIVINA MELANGE 3 0571



DIVINA MELANGE 3 0581



DIVINA MELANGE 3 0597



DIVINA MELANGE 3 0617



DIVINA MELANGE 3 0620



DIVINA MELANGE 3 0647



DIVINA MELANGE 3 0677



DIVINA MELANGE 3 0687



DIVINA MELANGE 3 0731



DIVINA MELANGE 3 0747



DIVINA MELANGE 3 0757

Textiles Divina Melange 3



DIVINA MELANGE 3

0777



DIVINA MELANGE 3

0787



DIVINA MELANGE 3

0821



DIVINA MELANGE 3

0871



DIVINA MELANGE 3

0917



DIVINA MELANGE 3

0937



DIVINA MELANGE 3

0967



DIVINA MELANGE 3

0977

## HALLINGDAL 65

Kvadrat's first textile 'Hallingdal' has become the archetype of woollen textiles. The very durable upholstery fabric was originally designed in 1965 by Nanna Ditzel, and is now available in a version with an updated colour scale: Hallingdal 65.

Hallingdal 65 is made of wool and viscose, which complement each other well: the wool provides excellent durability and flexibility, whilst the viscose adds brilliance and depth to the colour. Both materials are dyed before they are spun, which highlights the rich texture of the fabric.



<b>Category</b>	Kvadrat upholstery
<b>Price Group</b>	5
<b>Pattern</b>	Solid
<b>Composition</b>	70% new wool, 30% viscose
<b>Width</b>	Approx. 130 cm (Approx. 51")
<b>Weight</b>	795 g/lin. m (25.64 oz/ly)
<b>Repeat</b>	Approx. 0/0 cm (Approx. 0"/0")
<b>Durability</b>	100,000 Martindale
<b>Pilling</b>	3-4 (ISO 1-5)
<b>Lightfastness</b>	7
<b>Fire Tests</b>	AS/NZS 1530.3 • BS 5852 Crib 5 • BS 5852 part 1 • IMO FTP Code 2010 Part 8 • NF D 60 013 • NFPA 260 • UNI 9175 1IM • US Cal. Bull. 117-2013 • EN 1021-1/2 • ASTM E84 Class A Adhered • SN 198 898 5.3 with treatment • ÖNORM B1/Q1 • GB 50222 B1 with treatment (Chinese) • AS/NZS 3837 class 2 • ASTM E84 Class B Unadhered
<b>Fastness to rubbing</b>	4-5 (Dry) 3-4 (Wet)
<b>Airflow</b>	182 Pa s/m
<b>Absorption</b>	0.45/Class D (Absorption flat) 0.70/Class C (Absorption folded)
<b>Seam Slippage</b>	4.5 mm (warp), 4 mm (weft)

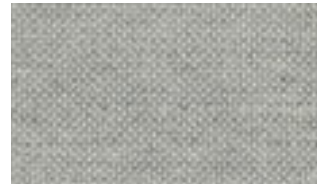
Textiles Hallingdal 65



HALLINGDAL 65 0100



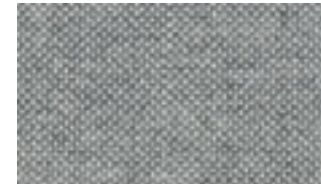
HALLINGDAL 65 0103



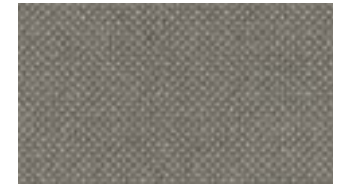
HALLINGDAL 65 0110



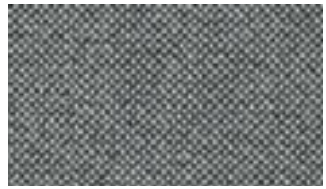
HALLINGDAL 65 0113



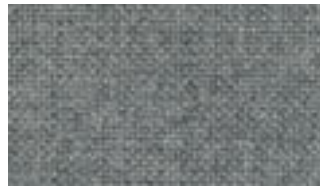
HALLINGDAL 65 0116



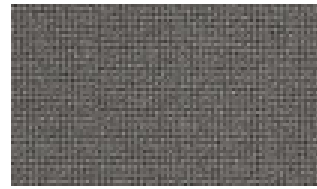
HALLINGDAL 65 0123



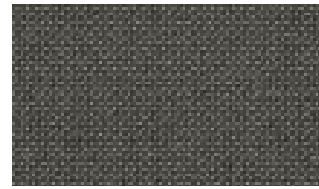
HALLINGDAL 65 0126



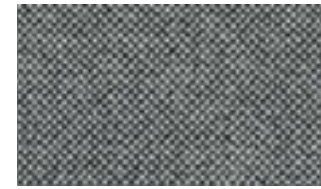
HALLINGDAL 65 0130



HALLINGDAL 65 0143



HALLINGDAL 65 0153



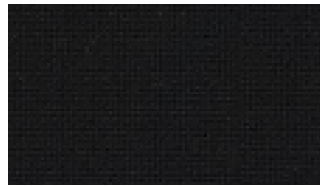
HALLINGDAL 65 0166



HALLINGDAL 65 0173



HALLINGDAL 65 0180



HALLINGDAL 65 0190



HALLINGDAL 65 0200



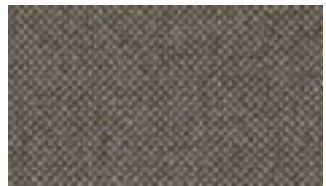
HALLINGDAL 65 0220



HALLINGDAL 65 0224



HALLINGDAL 65 0227



HALLINGDAL 65 0270



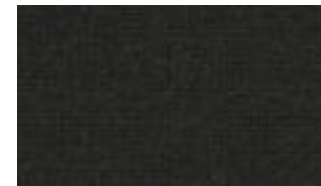
HALLINGDAL 65 0350



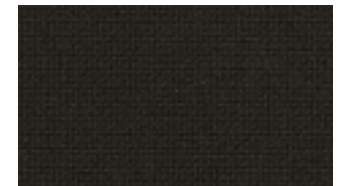
HALLINGDAL 65 0368



HALLINGDAL 65 0370



HALLINGDAL 65 0376



HALLINGDAL 65 0390



HALLINGDAL 65 0407



HALLINGDAL 65 0420



HALLINGDAL 65 0457



HALLINGDAL 65 0526



HALLINGDAL 65 0547



HALLINGDAL 65 0563

Textiles Hallingdal 65



HALLINGDAL 65

0573



HALLINGDAL 65

0590



HALLINGDAL 65

0596



HALLINGDAL 65

0600



HALLINGDAL 65

0657



HALLINGDAL 65

0660



HALLINGDAL 65

0674



HALLINGDAL 65

0680



HALLINGDAL 65

0687



HALLINGDAL 65

0694



HALLINGDAL 65

0702



HALLINGDAL 65

0723



HALLINGDAL 65

0733



HALLINGDAL 65

0750



HALLINGDAL 65

0753



HALLINGDAL 65

0754



HALLINGDAL 65

0763



HALLINGDAL 65

0764



HALLINGDAL 65

0773



HALLINGDAL 65

0810



HALLINGDAL 65

0840



HALLINGDAL 65

0850



HALLINGDAL 65

0890



HALLINGDAL 65

0907



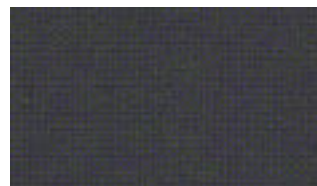
HALLINGDAL 65

0944



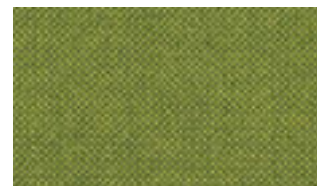
HALLINGDAL 65

0960



HALLINGDAL 65

0968



HALLINGDAL 65

0980



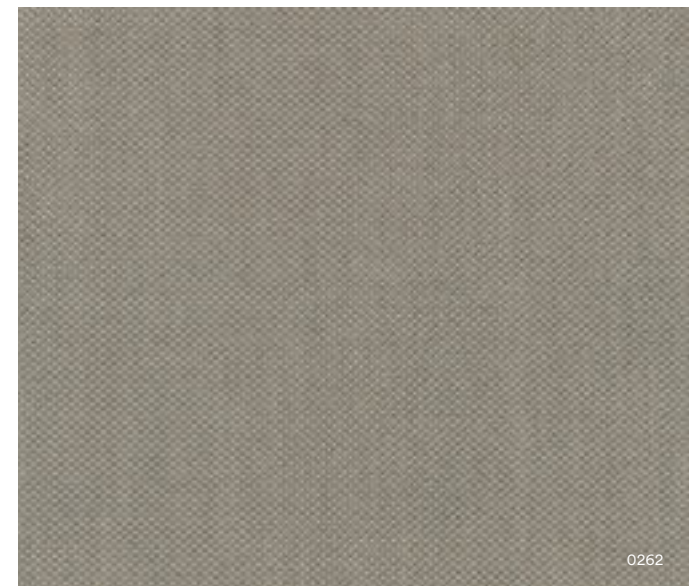


Burra Chairs in Vidar, 1511



## FIORD 2

The construction of Fiord combines a mélange yarn with a unicoloured yarn that creates pearl-like dots that play across the textile's surface. This sophisticated expression reflects a key source of inspiration behind the design: moonlight glittering like pearls on the rippling waters of a Norwegian fjord.



<b>Category</b>	Kvadrat upholstery
<b>Price Group</b>	5
<b>Pattern</b>	Solid
<b>Composition</b>	92% new wool worsted, 8% nylon
<b>Width</b>	Approx. 140 cm (Approx. 55")
<b>Weight</b>	500 g/lin. m (16.13 oz/ly)
<b>Repeat</b>	Approx. 0/0 cm (Approx. 0"/0")
<b>Durability</b>	60,000 Martindale
<b>Pilling</b>	4-5 (ISO 1-5)
<b>Lightfastness</b>	6
<b>Fire Tests</b>	BS 5852 crib 5 with treatment • BS 5852 part 1 • IMO FTP Code 2010 Part 8 • NF D 60 013 • NFPA 260 • SN 198 898 5.3 with treatment • UNI 9175 1IM • US Cal. Bull. 117-2013 • EN 1021-1/2 • ASTM E84 Class A Adhered • ASTM E84 Class A Unadhered • AS/NZS 3837 class 2 • GB 50222 B1 with treatment (Chinese) • ÖNORM B1/Q1
<b>Fastness to rubbing</b>	4-5 (Dry) 4-5 (Wet)
<b>Airflow</b>	484 Pa s/m
<b>Seam Slippage</b>	4.5 mm (warp), 5 mm (weft)

Textiles Fiord 2



FIORD 2 0101



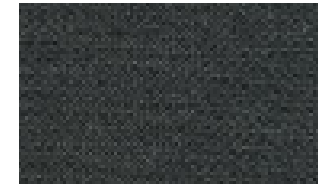
FIORD 2 0121



FIORD 2 0151



FIORD 2 0171



FIORD 2 0191



FIORD 2 0201



FIORD 2 0251



FIORD 2 0262



FIORD 2 0271



FIORD 2 0322



FIORD 2 0351



FIORD 2 0371



FIORD 2 0391



FIORD 2 0422



FIORD 2 0442



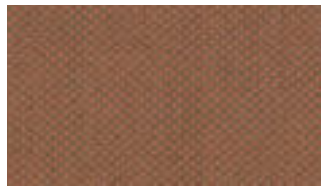
FIORD 2 0451



FIORD 2 0521



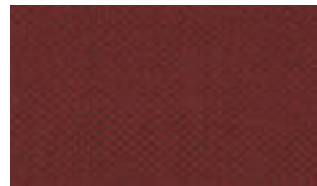
FIORD 2 0551



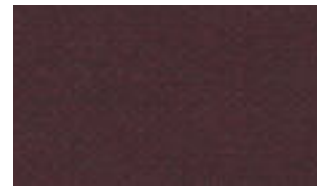
FIORD 2 0562



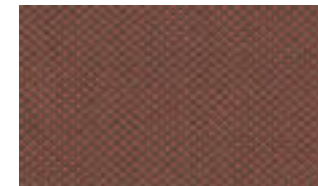
FIORD 2 0571



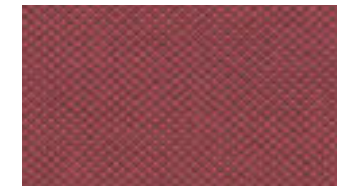
FIORD 2 0581



FIORD 2 0591



FIORD 2 0642



FIORD 2 0662



FIORD 2 0751



FIORD 2 0771



FIORD 2 0782



FIORD 2 0791



FIORD 2 0821



FIORD 2 0862

**Textiles** Fiord 2



**FIORD 2**

0951



**FIORD 2**

0961



**FIORD 2**

0971



**FIORD 2**

0981



**FIORD 2**

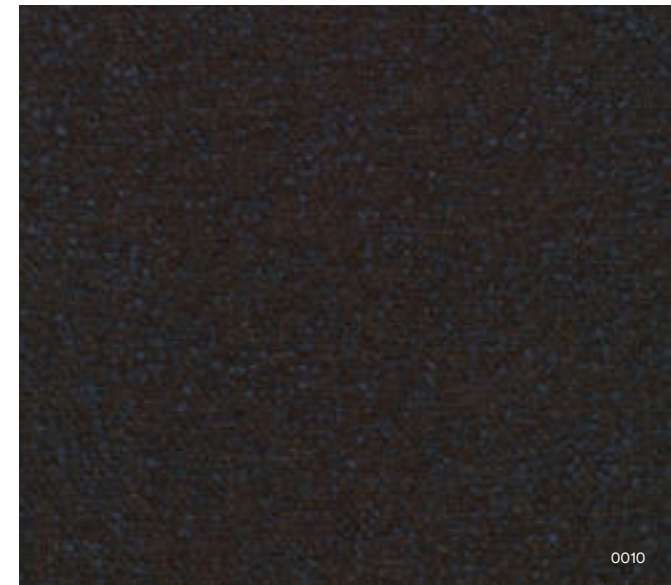
0991

# ZERO

The influence of Parisian couture clothing can be seen in this elegant and irregular bouclé upholstery textile. The pearl effect yarn is used in both warp and weft giving a luxurious handle and a sophisticated appearance. The sixteen colourways range from tonal through to contrasting 'salt and pepper' combinations.



0011



0010

<b>Category</b>	Sahco upholstery
<b>Price Group</b>	6
<b>Composition</b>	65% cotton, 20% polyacrylic, 15% polyester
<b>Width</b>	140 cm (55")
<b>Weight</b>	740 g/lin. m (23.87 oz/ly)
<b>Repeat</b>	0/0 cm ( 0"/0")
<b>Durability</b>	70,000 Martindale
<b>Pilling</b>	5 (ISO 1-5)
<b>Lightfastness</b>	5-6 (ISO 1-8)
<b>Fire Tests</b>	BS 5852 crib 5 with treatment • EN 1021-1 • US Cal. 117-2013 with Cal. 117 compliant interliner • BS 5852 part 1 with treatment
<b>Seam Slippage</b>	2 mm (warp), 2 mm (weft)

Textiles Zero



ZERO 0001



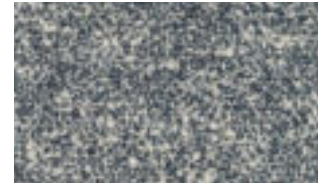
ZERO 0002



ZERO 0003



ZERO 0004



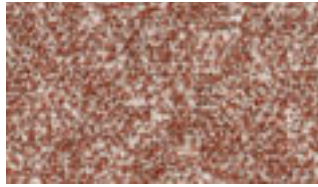
ZERO 0005



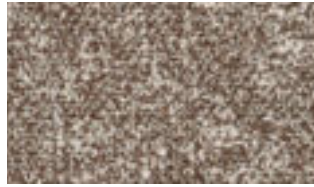
ZERO 0006



ZERO 0007



ZERO 0008



ZERO 0009



ZERO 0010



ZERO 0011



ZERO 0012



ZERO 0013



ZERO 0014



ZERO 0015



ZERO 0016

## VIDAR 4

Originally designed by Fanny Aronsen, Vidar has been re-coloured by Raf Simons, with shades ranging from moss green, dark aubergine, ruby red and midnight blue through to brick and earth tones, and easy neutrals.

Tightly woven, without the irregularities of the other bouclé fabrics within this collection, Vidar has an inviting texture, which variously recalls blackberries, orange peel or the comforting close-knit texture of a favourite sweater.



0146

<b>Category</b>	Kvadrat/Raf Simons upholstery
<b>Price Group</b>	6
<b>Pattern</b>	Solid
<b>Composition</b>	94% new wool, 6% nylon
<b>Width</b>	Approx. 140 cm (Approx. 55")
<b>Weight</b>	770 g/lin. m (24.84 oz/ly)
<b>Repeat</b>	Approx. 0/0 cm (Approx. 0"/0")
<b>Durability</b>	100,000 Martindale
<b>Pilling</b>	4 (ISO 1-5)
<b>Lightfastness</b>	7
<b>Fire Tests</b>	BS 5852 crib 5 with treatment • BS 5852 part 1 • IMO FTP Code 2010 Part 8 • NF D 60 013 • NFPA 260 • UNI 9175 1IM • US Cal. Bull. 117-2013 • EN 1021-1/2 • AS/NZS 3837 class 2 • GB 50222 B1 with treatment (Chinese) • SN 198 898 5.3 with treatment • IMO FTP Code 2010 Part 7 with treatment
<b>Fastness to rubbing</b>	3-4 (Dry) 3 (Wet)
<b>Airflow</b>	367 Pa s/m
<b>Absorption</b>	0.55/Class D (Absorption flat)

Textiles Vidar 4



VIDAR 4 0106



VIDAR 4 0123



VIDAR 4 0133



VIDAR 4 0143



VIDAR 4 0146



VIDAR 4 0152



VIDAR 4 0182



VIDAR 4 0222



VIDAR 4 0323



VIDAR 4 0333



VIDAR 4 0353



VIDAR 4 0363



VIDAR 4 0386



VIDAR 4 0443



VIDAR 4 0456



VIDAR 4 0472



VIDAR 4 0526



VIDAR 4 0542



VIDAR 4 0554



VIDAR 4 0556



VIDAR 4 0582



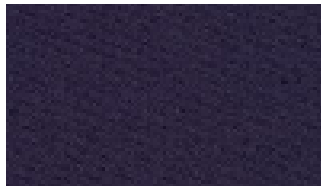
VIDAR 4 0622



VIDAR 4 0633



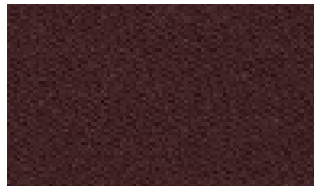
VIDAR 4 0653



VIDAR 4 0656



VIDAR 4 0676



VIDAR 4 0693



VIDAR 4 0723



VIDAR 4 0733



VIDAR 4 0743



Textiles Vidar 4



VIDAR 4

0772



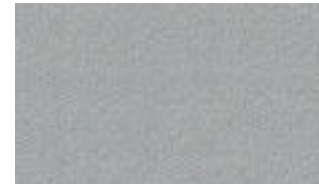
VIDAR 4

0786



VIDAR 4

0872



VIDAR 4

0913



VIDAR 4

0932



VIDAR 4

0943



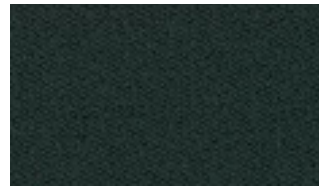
VIDAR 4

0956



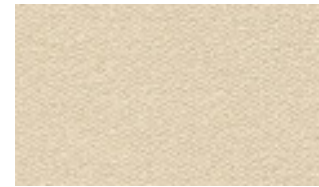
VIDAR 4

0972



VIDAR 4

1062



VIDAR 4

1511



VIDAR 4

1880



# ELLE

A curled bouclé fabric, Elle drapes and curves around furniture like an elegant designer coat. The spun bouclé yarn created by blending wool, viscose and acrylic gives the surface a soft tactility. During the subsequent dyeing the yarns take the colour differently, creating captivating shifts within the same tones.



0200

<b>Category</b>	Sahco upholstery
<b>Price Group</b>	7
<b>Composition</b>	25% cotton, 20% viscose, 20% polyacrylic, 20% wool, 15% polyamide
<b>Width</b>	140 cm (55")
<b>Weight</b>	900 g/lin. m (29.03 oz/ly)
<b>Repeat</b>	0/0 cm ( 0"/0")
<b>Durability</b>	70,000 Martindale
<b>Pilling</b>	4-5 (ISO 1-5)
<b>Lightfastness</b>	6 (ISO 1-8)
<b>Fire Tests</b>	US Cal. Bull. 117-2013 • BS 5852 crib 5 with treatment • EN 1021-1/2 • BS 5852 part 1 • IMO FTP Code 2010 Part 8
<b>Fastness to rubbing</b>	4-5 (Dry) 4 (Wet)
<b>Seam Slippage</b>	7 mm (warp), 2 mm (weft)

Textiles Elle



ELLE 0150



ELLE 0180



ELLE 0200



ELLE 0220



ELLE 0230



ELLE 0280



ELLE 0290



ELLE 0350



ELLE 0390



ELLE 0480



ELLE 0530



ELLE 0680



ELLE 0750



ELLE 0950

## RAR COLLECTION

A timeless, dark grey fabric, elegantly woven with a classic weave texture, Re-Born is primarily crafted from a recycled polyethylene and a hardwearing polyester. The sophisticated Venezia Off-White textile features a combination of slightly different off-white shades woven into each other with a tactility reminiscent of a subtle bouclé-like fabric.

RE-BORN, DARK GREY



RE-BORN

DARK GREY



VENEZIA

OFF-WHITE

### RE-BORN

<b>Composition</b>	60% recycled polyethylene, 40% polyester
<b>Durability</b>	100.000 Martindale
<b>Lightfastness</b>	4-5
<b>Pilling</b>	4

### VENEZIA

<b>Composition</b>	62% polyester, 17% cotton, 14% viscose, 7% linen
<b>Durability</b>	40.000 Martindale
<b>Lightfastness</b>	5
<b>Pilling</b>	4



Rar Sofa in Venezia Off-White & Rar Cushions 50x50 in Venezia Off-White and Re-Born Dark Grey

# CONTACT

NORMANN COPENHAGEN

Niels Hemmingsens Gade 12,  
1153 Copenhagen, Denmark

[normann@normann-copenhagen.com](mailto:normann@normann-copenhagen.com)

+45 35 55 44 59

**normann**  
C O P E N H A G E N