



Sumo Seat

Material

- Cover: 82% polyester / 18% acrylic
- Inner bag backrest: Non-woven polyester
- Inner bag seating: Non-woven polyester with Dacron lining
- Frame: Steel (galvanized and powdercoated)

Filling

Backrest: chopped foam
Seating: SG32 hybrid polyether / EPP element

Treatment

FibreGuard provides strong stain resistance for a wide variety of common household stains. The FibreGuard process coats the yarn in the finishing process resulting in an inherent strength and longevity to the stain resistance that will last for the life of the fabric.

Weight product
25.8 kg €

Dimensions

108 x 108 x 90 cm €

Weight product + packaging

32.4 kg €

Dimensions packaging

Seating: 102.4 x 102.4 x 41.4 cm
Backrest: 60 x 50 x 78 cm

Washing instructions

- Machine wash cool
- Gentle cycle
- Dry cleaning possible
- Do not bleach
- Do not tumble dry
- Drip dry in shade
- Iron on the lowest temperature

Batch number

In the cover, close to the zipper on a white label.

Certificate

Passes the USA NFPA 260 Class 1 (UFAC) & CAL117/SE MVSS 302. Passes the BS 5852 Source O. Oeko-tex Standard 100

Labotex ISO 17025

FibreGuard Stains Free Technology

Recommendations

Do not poke with sharp objects, this might cause the fabric to tear, exposing the filling.

Circular design

With the Sumo Sofa series, Fatboy is unleashing its sustainable design philosophy for a circular future. All parts of the Sumo Sofa are easy to repair or replace, so you can keep it looking like new. And should you move house (or just fancy a new sofa), reassembling it into a new Sumo Sofa set couldn't be easier.



HOW TO ENJOY YOUR PRODUCT TO THE MAX

Keeping it clean

Use a wet cloth to gently cleanse the area by patting it.

For heavily soiled areas lightly scrub the area with a sponge soaked in mild detergent and rinse with cold water.





Modular system



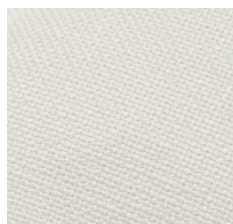
Washable and replaceable covers



Easily to assemble



FibreGuard stain resistant technology



Chunky basket-weave, durable fabric



Firm seating comfort



SUMO SEAT

Technical drawing

