

TECHNICAL FABRICS

AQUACLEAN®

Q/Wood/Clap



S4/C4/1
ecru



S3/C3/2
brown



S1/C1/3
black



S5/C5/4
green



S2/C2/5
powder blue

Clap



6
blue

Composition 50% PES, 3,5% PAC, 1,5% PA

Martindale 250.000



Kartell has decided to include the innovative Aquaclean® fabric, which can be cleaned with water and contains no PFC, a substance contained in most stain-resistant fabrics which pollutes the environment and is harmful to health.

This ecological fabric has a structure designed to simplify cleaning and strength, reducing the risk of accidental tearing sometimes caused by our pets. It is also subject to Safe Front treatment, which prevents the proliferation of bacteria and dust mites.

TREND FABRICS

NEW!

MELANGE

Eleganza



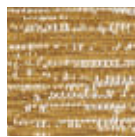
1
black



2
dove grey



3
sky blue



4
mustard



5
rust

Composition 45% post industrial recycled Cotton, 10% LI, 28% PC, 12% PL, 5% VI

Martindale 30.000



Made from
recycled fabric

NEW!

RUBELLI® DÉJEUNER SUR L'HERBE

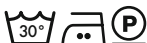
Madame



D
Déjeuner

Composition 100% CO

Martindale 20.000



OEKO-TEX®
CONFIDENCE IN TEXTILES
STANDARD 100

NEW!

RUBELLI® QUATREFOIL DESIGN BY LUKE EDWARD HALL

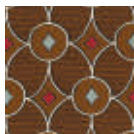
Mademoiselle/Clap



RC/A
Cream



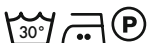
RP/S
Pistachio



RB/W
Brown

Composition 100% CO

Martindale 20.000



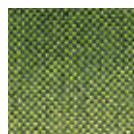
OEKO-TEX®
CONFIDENCE IN TEXTILES
STANDARD 100



CLASSIC FABRICS

TREVIRA

Foliage



D
green



C
grey



B
orange



A
beige

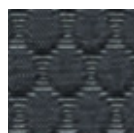
Composition 100% PL Trevira

Martindale 75.000



EMBOSSED

Clap



2
graphite



3
grey



4
orange

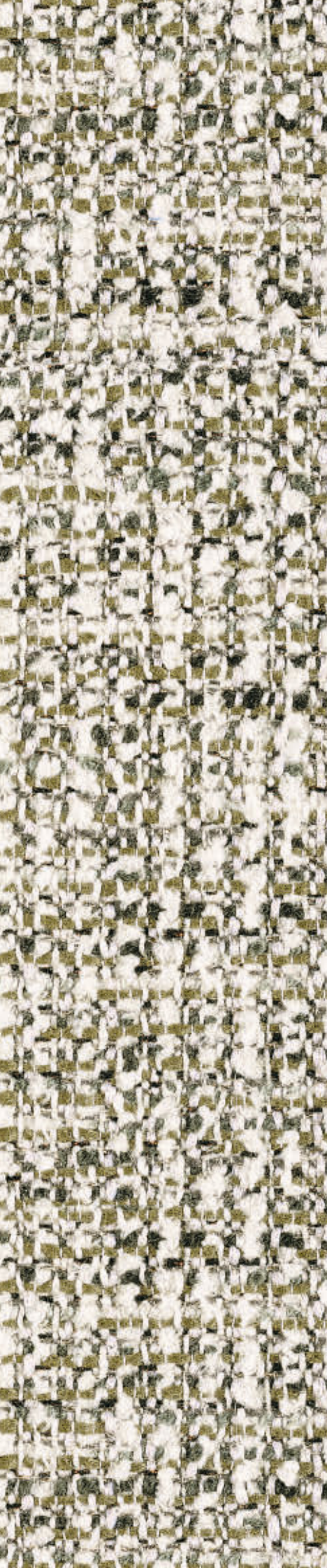


5
beige

Composition 100% PL

Martindale 25.000

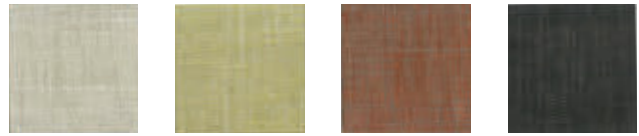




TREND FABRICS

SOLID

Cara/Cara Mat



1A
beige

2B
green

3C
rusty

4D
anthracite

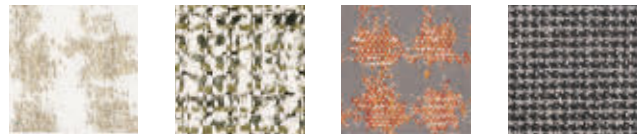
Composition 62% VI, 22% CO, 11% LI, 5% PL

Martindale 30.000



FANCY

Cara/Cara Mat



1E
white-beige

2F
green-black

3G
rusty-beige

4H
black-beige

1E white-beige - 3G rusty-beige

Composition 44% CO, 27% VI, 22% PL, 6% LI, 1% SE

Martindale 30.000



4H black-beige

Composition 38% VI, 30% CO, 20% PL, 12% LI

Martindale 25.000



2F green-black

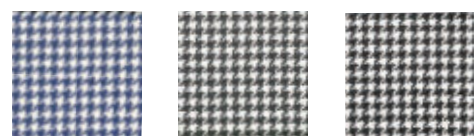
Composition 32% CO, 50% VI, 7% LI, 3% WO, 8% PC

Martindale 20.000



PIED DE POULE

Largo/Clap



TB/NE
blue

TG/NF
grey

TN/NH
black

Composition 49% LI, 38% CO, 13% VI

Martindale 35.000

